

# *Monthly Report*



# *June 2011*

## TABLE OF CONTENTS

Reporting Period Crime/Incident Reports: Total by Category & District	Pg 3
Reporting Period Property Stolen & Recovered Report: Totals	Pg 4
Reporting Period Officers Injured, Killed or Assaulted: Totals	Pg 5
Reporting Period Enforcement Action: State/Criminal Arrest Total	Pg 6
Reporting Period Enforcement Action: Ordinance Citation Total	Pg 7
Patrol Operations: Extra Patrol Total Hours by District & Location	Pg 8
Patrol Operations: Extra Patrol Detail Summary	Pg 9
Patrol Operations: Directed Area Patrol Totals by District & Location	Pg 10
Patrol Operations: Directed Area Patrol Detail Summary	Pg 11
Patrol Operations Report: Traffic Accidents Community Total by District	Pg 12
Patrol Operations: Parking Enforcement, Abandoned Vehicles, House Checks, Business Checks, & Open Doors	Pg 13
Financial Information	Pg 14
Overtime Analysis	Pg 15
Overtime Comparison	Pg 16

\*\*\*\*KEY:    RP = Reporting Period                    YTD = Year to Date  
              LYRP = Last Year Reporting Period        LYTD = Last Year to Date  
              LRP = Last Reporting Period

**IMPORTANT NOTE: The numbers reflected in this report are based specifically on total actuals and are NOT reflective of per capita statistics.**

## Reporting Period Crime/Incident Reports: Total by Category And District

	Crimes Against Persons	Crimes Against Property	Crimes Against Peace & Order	Domestic Violence	Traffic Complaint	Animal Complaint	Juveniles	Other	RP Totals	LRP Totals	% Change	LYRP Totals	% Change
District 1/Grid 1	0	1	3	0	1	1	0	1	7	4	75.0%	10	-30.0%
District 1/Grid 2	2	0	4	0	7	2	0	9	24	11	118.2%	19	26.3%
District 1/Grid 3	0	0	0	0	2	0	0	1	3	2	50.0%	1	200.0%
District 1/Grid 4	1	3	2	0	2	3	1	8	20	14	42.9%	13	53.8%
District 1/Grid 10	0	0	0	0	0	0	0	0	0	0	0.0%	0	0.0%
District 1/Grid 11	2	0	5	0	21	0	0	13	41	43	-4.7%	40	2.5%
District 1/Grid 12	0	0	0	0	1	0	0	1	2	5	-60.0%	0	200.0%
District 2/Grid 5	0	1	3	1	26	3	0	13	47	54	-13.0%	53	-11.3%
District 2/Grid 16	0	0	1	0	0	0	0	0	1	5	-80.0%	1	0.0%
District 3/Grid 6	3	3	8	1	9	0	1	16	41	36	13.9%	48	-14.6%
District 4/Grid 7	1	2	1	0	5	6	0	10	25	31	-19.4%	29	-13.8%
District 4/Grid 15	0	0	0	0	0	0	0	0	0	0	0.0%	0	0.0%
District 5/Grid 8	1	1	2	0	2	2	0	13	21	31	-32.3%	34	-38.2%
District 6/Grid 9	3	4	8	1	10	1	9	30	66	60	10.0%	85	-22.4%
District 6/Grid 13	0	0	0	0	3	0	0	0	3	0	300.0%	0	300.0%
District 6/Grid 14	0	0	0	0	0	0	0	0	0	0	0.0%	0	0.0%
Other	0	0	0	0	0	0	0	3	3	13	-76.9%	3	0.0%
<b>TOTALS</b>	13	15	37	3	89	18	11	118	304	309	-1.6%	336	-9.5%

## Reporting Period Property Stolen & Recovered Report: Totals

### Value of Property Stolen

	RP Totals	LRP Totals	LYRP Totals
District 1/Grid 1	\$ -	\$ -	\$ -
District 1/Grid 2	\$ -	\$ -	\$ 1,340.00
District 1/Grid 3	\$ -	\$ -	\$ -
District 1/Grid 4	\$ -	\$ -	\$ -
District 1/Grid 10	\$ -	\$ -	\$ -
District 1/Grid 11	\$ -	\$ 200.00	\$ 120.00
District 1/Grid 12	\$ -	\$ -	\$ -
District 2/Grid 5	\$ -	\$ 100.00	\$ 5,308.00
District 2/Grid 16	\$ -	\$ -	\$ -
District 3/Grid 6	\$ -	\$ -	\$ -
District 4/Grid 7	\$ -	\$ -	\$ -
District 4/Grid 15	\$ -	\$ -	\$ -
District 5/Grid 8	\$ 531.00	\$ 590.00	\$ -
District 6/Grid 9	\$ 350.00	\$ 387.00	\$ 674.00
District 6/Grid 13	\$ -	\$ -	\$ -
District 6/Grid 14	\$ -	\$ -	\$ -
<b>TOTALS</b>	<b>\$ 881.00</b>	<b>\$ 1,277.00</b>	<b>\$ 7,442.00</b>

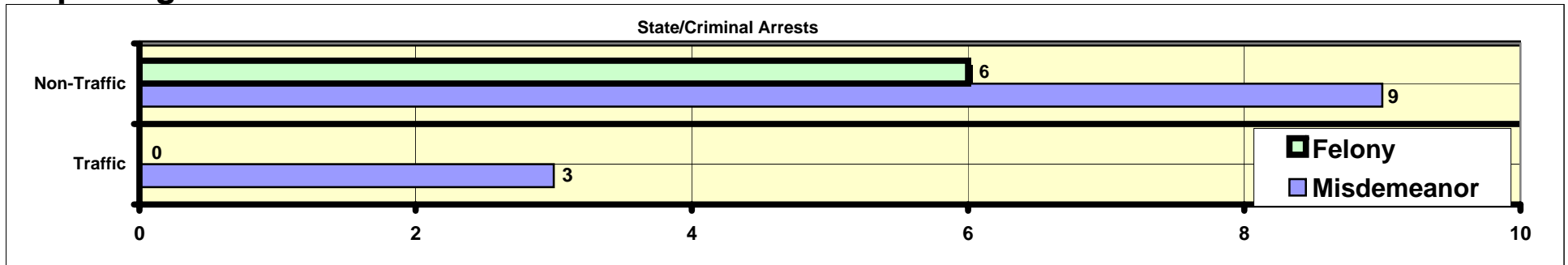
### Value of Property Recovered

	RP Totals	LRP Totals	LYRP Totals
District 1/Grid 1	\$ -	\$ -	\$ -
District 1/Grid 2	\$ -	\$ -	\$ 400.00
District 1/Grid 3	\$ -	\$ -	\$ -
District 1/Grid 4	\$ -	\$ -	\$ -
District 1/Grid 10	\$ -	\$ -	\$ -
District 1/Grid 11	\$ -	\$ -	\$ -
District 1/Grid 12	\$ -	\$ -	\$ -
District 2/Grid 5	\$ -	\$ -	\$ -
District 2/Grid 16	\$ -	\$ -	\$ -
District 3/Grid 6	\$ -	\$ -	\$ -
District 4/Grid 7	\$ -	\$ -	\$ -
District 4/Grid 15	\$ -	\$ -	\$ -
District 5/Grid 8	\$ 2.00	\$ -	\$ -
District 6/Grid 9	\$ 150.00	\$ -	\$ -
District 6/Grid 13	\$ -	\$ -	\$ -
District 6/Grid 14	\$ -	\$ -	\$ -
<b>TOTALS</b>	<b>\$ 152.00</b>	<b>\$ -</b>	<b>\$ 400.00</b>

## Reporting Period Officers Injured, Killed or Assaulted: Totals

	2011 June Totals	Year to Date Totals	2010 June Totals	Last Year to Date Totals
Use of Force Incidents	0	6	0	0
Officers Involved	0	8	0	0
Officers Injured	0	0	0	0
Officers Killed	0	0	0	0
Officers Assaulted	0	0	0	0
Subjects Involved	0	5	0	0
Subjects Injured	0	0	0	0

# Reporting Period Enforcement Action: Total

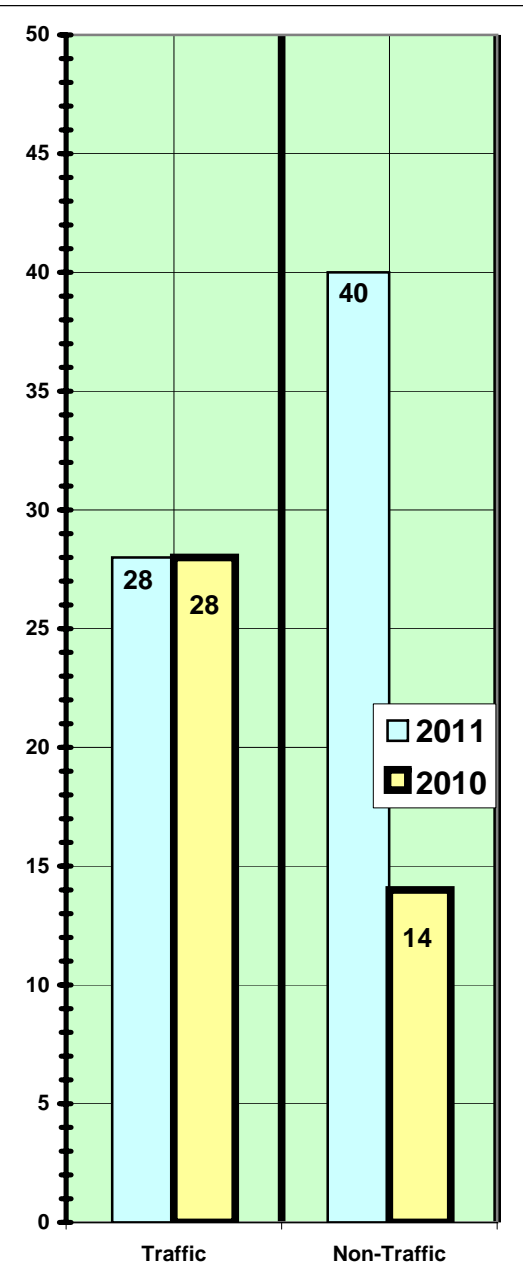


## State/Criminal Arrests

VIOLATION	Misdemeanor	Felony	2011 Monthly Total	2010 Monthly Total
Disorderly Conduct	4	0	4	2
Truancy	0	0	0	1
Theft	1	0	1	1
1st Degree Sexual Assault of a Child	0	1	1	0
Child Abuse - Recklessly Cause Harm	0	1	1	0
Intimidate Victim	0	1	1	0
Unlawful Possession of Prescription Drugs	1	0	1	0
Possession of THC	0	0	0	1
Possession of Drug Paraphernalia	0	0	0	1
Suffocation/Strangulation	0	1	1	0
Deliver/Possess Prescription Drug w/Intent to Deliver	0	0	0	1
Criminal Damage to Property	0	0	0	2
False Imprisonment	0	1	1	0
Battery	2	0	2	1
Forgery - Writings	0	0	0	1
Carry Concealed Weapon	1	0	1	0
Bailjumping	0	1	1	2
Fraud - Obtain Credit/Money/Goods/Services	0	0	0	1
Burglary - Attempted	0	0	0	1
Operate MV While Intoxicated	1	0	1	2
Operate MV With Prohibited Alcohol Concentration	0	0	0	1
Operate without valid License	0	0	0	1
Operating After Revocation	2	0	2	1
<b>TOTALS</b>	<b>12</b>	<b>6</b>	<b>18</b>	<b>20</b>

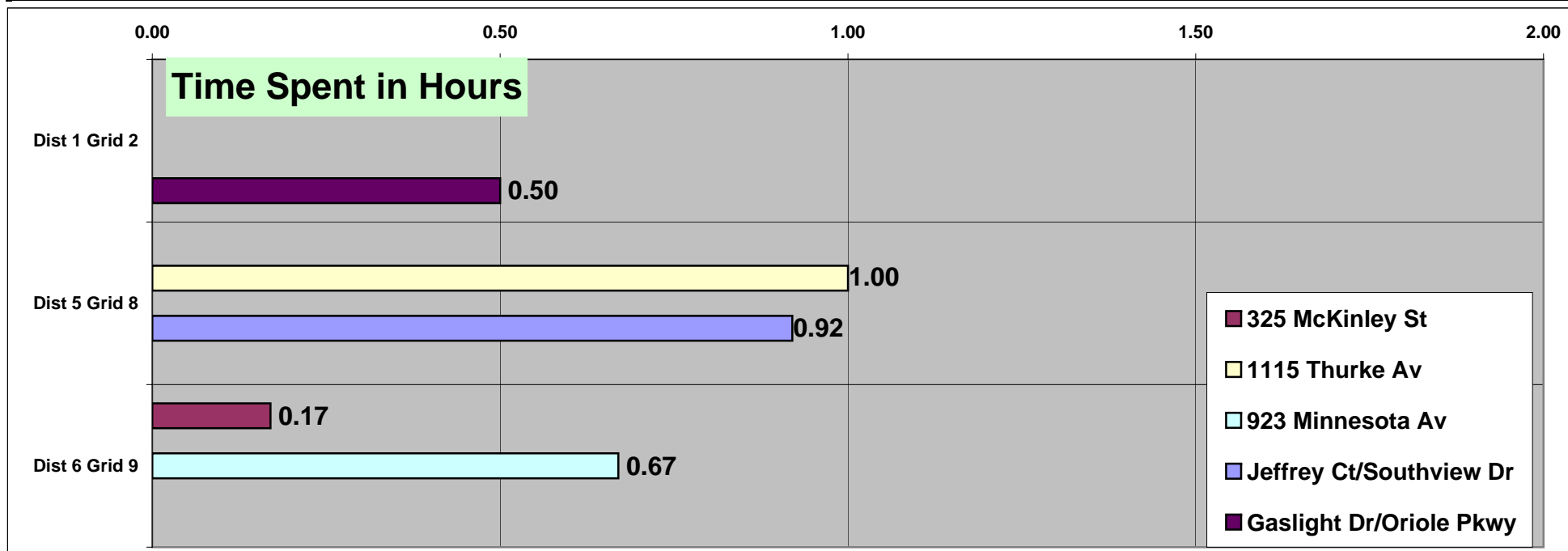
## Reporting Period Enforcement Action: NON-CRIMINAL ARRESTS AND CITATIONS TOTALS

VIOLATION	2011 Monthly Total	2010 Monthly Total
Disorderly Conduct	5	0
Resisting/Obstructing Officer	0	1
Deface/Destroy Property	2	2
Fail to License Cat	1	0
Theft	3	0
Truancy	6	6
Trespass to Property	1	0
Possession of Marijuana	4	1
Possession of Drug Paraphernalia	3	2
Underage Alcohol Consumption/Possession	2	0
Juvenile Use/Possess/Purchase Tobacco Product	7	2
Give/Sell Tobacco Product to Juvenile	1	0
Unlawful Discharge of Firearm/Weapon	1	0
Harbor Animal that is Public Nuisance	1	0
Fail to Keep Dog Restrained	3	0
Operating After Suspension	3	3
Operating After Revocation	2	2
Seatbelt Violation	5	8
Speeding	5	1
Failure to Stop at Stop Sign	1	1
Operate Left of Center Line	0	1
Vehicle Owner's Liability for FSA	1	0
Unsafe Lane Deviation	1	1
Vehicle Operated After Registration Suspended	2	2
Inattentive Driving	1	0
Reckless Driving - Endanger Safety	1	0
Operate MV w/o Valid Driver's License	2	1
Violate Red Traffic Signal	1	0
Non-Registration of Auto	0	4
Disorderly Conduct with MV	0	1
Driver's License Restriction Violation	0	1
Operate with a Prohibited Alcohol Concentration	1	1
Operate While Intoxicated	2	1
Totals	68	42



## Patrol Operations: Extra Patrol Total Hours by District & Location

	Dist 1 Grid 1	Dist 1 Grid 2	Dist 1 Grid 3	Dist 1 Grid 4	Dist 1 Grid 10	Dist 1 Grid 11	Dist 1 Grid 12	Dist 2 Grid 5	Dist 2 Grid 16	Dist 3 Grid 6	Dist 4 Grid 7	Dist 4 Grid 15	Dist 5 Grid 8	Dist 6 Grid 9	Dist 6 Grid 13	Dist 6 Grid 14	Other	RP Totals	LRP Totals	LYRP Totals
Jeffrey Ct/Southview Dr													0.92					0.92	0.00	0.00
325 McKinley St														0.17				0.17	0.75	0.33
1115 Thurke Av													1.00					1.00	2.25	0.17
923 Minnesota Av														0.67				0.67	1.00	0.42
Prospect Av/Lincoln St																		0.00	3.17	0.00
Florida Av/Garfield St																		0.00	0.00	0.42
LeMieux Park																		0.00	0.00	12.08
Optimist Park																		0.00	0.00	5.33
Robin Dr/Mockingbird La																		0.00	0.00	0.25
Gaslight Dr/Oriole Pkwy		0.50																0.50	0.00	0.00
Prospect Av/Winnebago St																		0.00	0.00	0.00
																		0.00	0.00	0.00
																		0.00	0.00	0.00
<b>TOTAL HOURS</b>	0	0.5	0	0	0	0	0	0	0	0	0	0	1.92	0.84	0	0	0	3.26	7.17	19.00



**NOTE: Addresses or intersections are used for activity tracking purposes and may not be reflective of the total area monitored.**

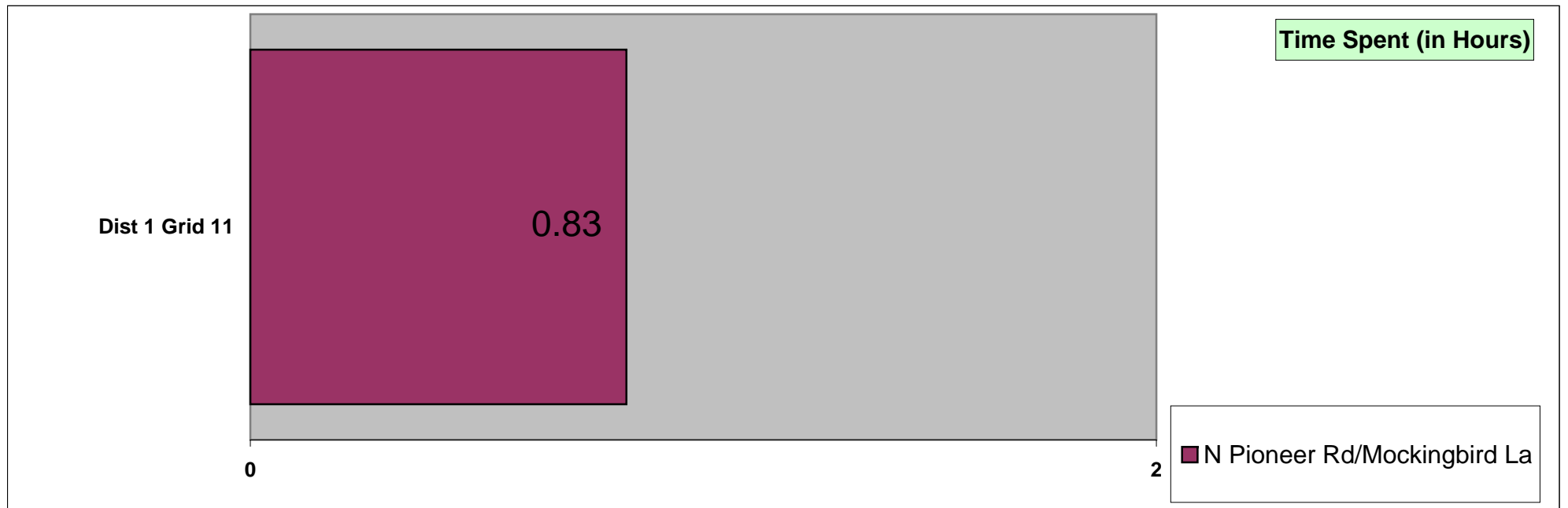
## Patrol Operations: Extra Patrol Detail Summary

Addresses	Cause/Summary	Contacts	Status
1115 Thurke Av	Standing Extra Patrol in School Zone	1	Active
325 McKinley St	Standing Extra Patrol in School Zone	0	Active
923 Minnesota Av	Standing Extra Patrol in School Zone	0	Active
Jeffrey Ct/Southview Dr	Suspicious Activity in Area	0	Cancelled
Gaslight Dr/Oriole Pkwy	Report of Vehicles Speeding in area	2	Active

**NOTE: Addresses or intersections are used for activity tracking purposes and may not be reflective of the total area monitored.**

## Patrol Operations: Directed Area Patrol Totals Hours by District & Location

	Dist 1 Grid 1	Dist 1 Grid 2	Dist 1 Grid 3	Dist 1 Grid 4	Dist 1 Grid 10	Dist 1 Grid 11	Dist 1 Grid 12	Dist 2 Grid 5	Dist 2 Grid 16	Dist 3 Grid 6	Dist 4 Grid 7	Dist 4 Grid 15	Dist 5 Grid 8	Dist 6 Grid 9	Dist 6 Grid 13	Dist 6 Grid 14	Other	RP Totals	LRP Totals	LYRP Totals
Minnesota Av/McKinley St																		0	0	3.25
N Pioneer Rd/Mockingbird La						0.83												0.83	1.67	2.08
Wisconsin Av/Harrison St																		0	0	5.42
Village Park																		0	0	0.17
Chapman Av/North St																		0	0	11.75
Northern Lights Estates																		0	0	0
<b>TOTAL HOURS</b>	0	0	0	0	0	0.83	0	0	0	0	0	0	0	0	0	0	0	0.83	1.67	22.67



**NOTE: Addresses or intersections are used for activity tracking purposes and may not be reflective of the total area monitored.**

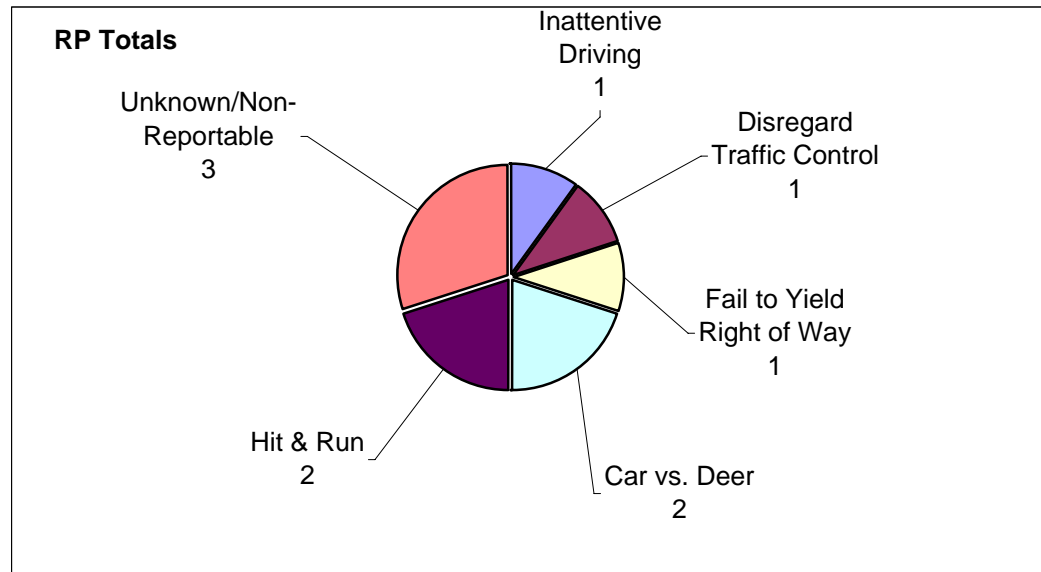
## Patrol Operations: Directed Area Patrol Detail Summary

Addresses	Cause/Summary	Contacts	Status
N Pioneer Rd/Mockingbird La	Monitor for numerous traffic offenses during auction time	6	Active

**NOTE: Addresses or intersections are used for activity tracking purposes and may not be reflective of the total area monitored.**

# Patrol Operations: Traffic Accidents Community Total

	Reportable	Non-Reportable	RP Totals	LRP Totals	% Change	LYRP Totals	% Change	Hit & Run	Injuries	Fatalities	RP Totals	LRP Totals	% Change	LYRP Totals	% Change
District 1/Grid 1	0	0	0	0	0.0%	0	0.0%	0	0	0	0	0	0.0%	0	0.0%
District 1/Grid 2	0	1	1	1	0.0%	1	0.0%	1	0	0	1	0	100.0%	1	0.0%
District 1/Grid 3	0	0	0	0	0.0%	0	0.0%	0	0	0	0	0	0.0%	0	0.0%
District 1/Grid 4	1	0	1	0	100.0%	0	100.0%	0	0	0	0	0	0.0%	0	0.0%
District 1/Grid10	0	0	0	0	0.0%	0	0.0%	0	0	0	0	0	0.0%	0	0.0%
District 1/Grid11	0	1	1	0	100.0%	2	0.0%	0	0	0	0	0	0.0%	0	0.0%
District 1/Grid12	0	0	0	0	0.0%	0	0.0%	0	0	0	0	0	0.0%	0	0.0%
District 2/Grid 5	3	1	4	1	300.0%	1	300.0%	0	3	0	3	0	300.0%	0	300.0%
District 2/Grid 16	0	0	0	0	0.0%	0	0.0%	0	0	0	0	0	0.0%	0	0.0%
District 3/Grid 6	0	1	1	1	0.0%	0	100.0%	0	0	0	0	0	0.0%	0	0.0%
District 4/Grid 7	0	1	1	3	-66.7%	0	100.0%	0	0	0	0	0	0.0%	0	0.0%
District 4/Grid 15	0	0	0	0	0.0%	0	0.0%	0	0	0	0	0	0.0%	0	0.0%
District 5/Grid 8	0	0	0	0	0.0%	0	0.0%	0	0	0	0	0	0.0%	0	0.0%
District 6/Grid 9	1	0	1	0	100.0%	2	-50.0%	1	0	0	1	0	100.0%	0	100.0%
District 6/Grid 13	0	0	0	0	0.0%	0	0.0%	0	0	0	0	0	0.0%	0	0.0%
District 6/Grid 14	0	0	0	0	0.0%	0	0.0%	0	0	0	0	0	0.0%	0	0.0%
Other	0	0	0	0	0.0%	0	0.0%	0	0	0	0	0	0.0%	0	0.0%
<b>TOTALS</b>	<b>5</b>	<b>5</b>	<b>10</b>	<b>6</b>	<b>66.7%</b>	<b>6</b>	<b>66.7%</b>	<b>2</b>	<b>3</b>	<b>0</b>	<b>5</b>	<b>0</b>	<b>500.0%</b>	<b>1</b>	<b>400.0%</b>



**Patrol Operations: Parking Enforcement, Abandoned Vehicles, House Checks, Business Checks,  
Business Checks, SIFA/1037 (Self Initiated Field Activity/Suspicious) & Open Doors**

Parking Enforcement						House Checks					Abandoned Vehicles				
DISTRICTS	RP Totals	LRP Totals	% Change	LYRP Totals	% Change	RP Totals	LRP Totals	% Change	LYRP Totals	% Change	RP Totals	LRP Totals	% Change	LYRP Totals	% Change
District 1/Grid 1	0	0	0%	0	0%	0	0	0%	0	0%	0	0	0%	0	0%
District 1/Grid 2	0	0	0%	0	0%	18	13	38%	3	500%	0	0	0%	0	0%
District 1/Grid 3	0	0	0%	0	0%	0	0	0%	0	0%	0	0	0%	0	0%
District 1/Grid 4	0	0	0%	2	-200%	1	0	100%	28	-96%	0	1	-100%	3	-300%
District 1/Grid 10	0	0	0%	0	0%	0	0	0%	0	0%	0	0	0%	0	0%
District 1/Grid 11	0	2	-200%	1	-100%	0	0	0%	0	0%	0	1	-100%	0	0%
District 1/Grid 12	0	0	0%	0	0%	0	0	0%	0	0%	0	0	0%	0	0%
District 2/Grid 5	0	0	0%	0	0%	3	0	300%	0	300%	0	0	0%	0	0%
District 2/Grid 16	0	0	0%	0	0%	0	0	0%	0	0%	0	0	0%	0	0%
District 3/Grid 6	0	0	0%	1	-100%	5	0	500%	0	500%	0	0	0%	0	0%
District 4/Grid 7	0	0	0%	0	0%	3	0	300%	5	-40%	0	1	-100%	1	-100%
District 4/Grid 15	0	0	0%	0	0%	0	0	0%	0	0%	0	0	0%	0	0%
District 5/Grid 8	0	0	0%	1	-100%	3	3	0%	0	300%	0	0	0%	2	-200%
District 6/Grid 9	16	0	1600%	6	167%	0	0	0%	16	-1600%	0	0	0%	0	0%
District 6/Grid 13	0	0	0%	0	0%	0	0	0%	0	0%	0	0	0%	0	0%
District 6/Grid 14	0	0	0%	0	0%	0	0	0%	0	0%	0	0	0%	0	0%
Other	0	0	0%	0	0%	0	0	0%	0	0%	0	0	0%	0	0%
<b>TOTALS</b>	<b>16</b>	<b>2</b>	<b>700%</b>	<b>11</b>	<b>45%</b>	<b>33</b>	<b>16</b>	<b>106%</b>	<b>52</b>	<b>-37%</b>	<b>0</b>	<b>3</b>	<b>-300%</b>	<b>6</b>	<b>-600%</b>

Business Checks						SIFA/1037					Open Doors				
	RP Totals	LRP Totals	% Change	LYRP Totals	% Change	RP Totals	LRP Totals	% Change	LYRP Totals	% Change	RP Totals	LRP Totals	% Change	LYRP Totals	% Change
<b>Totals</b>	<b>491</b>	<b>781</b>	<b>-37%</b>	<b>581</b>	<b>-15%</b>	<b>11</b>	<b>14</b>	<b>-21%</b>	<b>15</b>	<b>-27%</b>	<b>4</b>	<b>6</b>	<b>-33%</b>	<b>10</b>	<b>-60%</b>

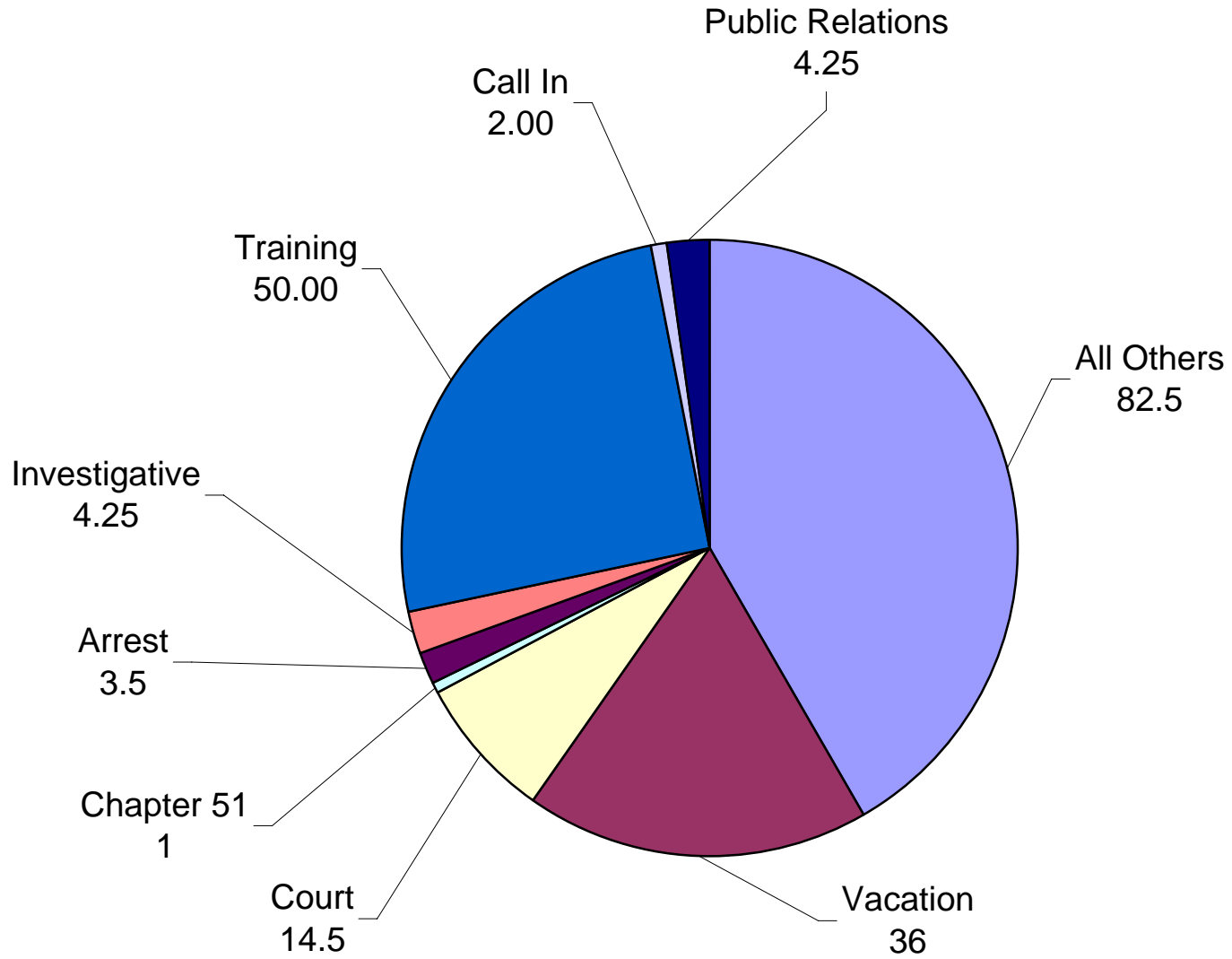
## Financial Information

Municipal Court Fines/Forfeitures	2011	2010
January	\$ 1,530.00	\$ 1,748.52
February	\$ 5,512.00	\$ 6,689.60
March	\$ 4,444.00	\$ 4,783.19
April	\$ 2,623.67	\$ 4,319.25
May	\$ 2,659.40	\$ 1,825.55
June	\$ 1,595.97	\$ 3,316.35
July		\$ 2,357.00
August		\$ 1,516.50
September		\$ 1,276.38
October		\$ 2,424.80
November		\$ 2,074.00
December		\$ 833.00
<b>Year to Date Amount</b>	<b>\$ 18,365.04</b>	<b>\$ 33,164.14</b>

Fond du Lac Clerk of Courts Fines/Forfeitures	2011	2010
January	\$ -	\$ -
February	\$ -	\$ -
March	\$ 75.00	\$ -
April	\$ 170.83	\$ 77.50
May	\$ -	\$ -
June	\$ -	\$ -
July		\$ -
August		\$ -
September		\$ -
October		\$ -
November		\$ -
December		\$ -
<b>Year to Date Amount</b>	<b>\$ 245.83</b>	<b>\$ 77.50</b>

Other Revenue	RP Totals	LRP Totals	LYRP Totals	YTD	LYTD
Parking Tickets	\$ 240.00	\$ 45.00	\$ 75.00	\$ 1,225.00	\$ 1,785.00
Bike Licenses	\$ 35.00	\$ 10.00	\$ 50.00	\$ 65.00	\$ 75.00
Operators Licenses	\$ 80.00	\$ 520.00	\$ 360.00	\$ 720.00	\$ 815.00
Vehicle Lockout Fees	\$ 40.00	\$ 40.00	\$ 120.00	\$ 770.00	\$ 480.00
Copies	\$ 35.90	\$ 30.40	\$ 49.75	\$ 260.01	\$ 135.40
Miscellaneous	\$ -	\$ 80.00	\$ -	\$ 390.00	\$ 20.00
<b>Totals</b>	<b>\$ 430.90</b>	<b>\$ 725.40</b>	<b>\$ 654.75</b>	<b>\$ 3,430.01</b>	<b>\$ 3,310.40</b>

**OVERTIME BY HOURS**



<b>OVERTIME TAKEN AS PAY</b>	<b>146.50</b>	Hrs
<b>OVERTIME TAKEN AS COMP</b>	<b>51.50</b>	Hrs
<b>TOTAL HOURS</b>	<b>198.00</b>	Hrs

Reason for Overtime	RP	LRP	LYRP
	Jun-11	May-11	Jun-10
Arrest Related	3.5	5.75	24
Public Relations	4.25	36.25	1.25
Vacation/Personal Day/etc.	36	24	52
Holiday Related - Time & 1/2	0	32	0
Holiday Related - Straight Pay	0	32	0
Court Related	14.5	4.5	7.25
Sick Leave	0	16	44
Training Related	50	69.25	40.75
Investigative	4.25	1.75	26.25
Call-In	2	0	2
Chapter 51 Related	1	2	0
Mutual Aid	0	12.5	0
Total Other	82.5	26.5	55.75
<b>Total Overtime Hours</b>	<b>198</b>	<b>262.5</b>	<b>253.25</b>

Reason for Overtime	RP %	LRP%	LYRP %
	Jun-11	May-11	Jun-10
Arrest Related	1.77%	2.19%	9.48%
Public Relations	2.15%	13.81%	0.49%
Vacation/Personal Day/etc.	18.18%	9.14%	20.53%
Holiday Related - Time & 1/2	0.00%	12.19%	0.00%
Holiday Related - Straight Pay	0.00%	12.19%	0.00%
Court Related	7.32%	1.71%	2.86%
Sick Leave	0.00%	6.10%	17.37%
Training Related	25.25%	26.38%	16.09%
Investigative	2.15%	0.67%	10.37%
Call-In	1.01%	0.00%	0.79%
Chapter 51 Related	0.51%	0.76%	0.00%
Mutual Aid	0.00%	4.76%	0.00%
Total Other	41.67%	10.10%	22.01%
<b>Total Overtime Hours</b>	<b>100.00%</b>	<b>100.00%</b>	<b>100.00%</b>