

# *Annual Report*



# 2009

## TABLE OF CONTENTS

Reporting Period Crime/Incident Reports: Total by Category & District	Pg 3
Reporting Period Crime/Incident Reports: Total by Category	Pg 4
Reporting Period Property Stolen & Recovered Report: Totals	Pg 5
Reporting Period Officers Injured, Killed or Assaulted: Totals	Pg 6
Reporting Period Enforcement Action: State/Criminal Arrest Totals	Pg 7-9
Reporting Period Enforcement Action: Traffic & Non-Traffic Totals	Pg 10
Reporting Period Enforcement Action: Ordinance Citation Totals	Pg 11-13
Patrol Operations: Extra Patrol Total Hours by District & Location	Pg 14
Patrol Operations: Extra Patrol Detail Summary	Pg 15
Patrol Operations: Directed Area Patrol Totals by District & Location with Detail Summary	Pg 16
Patrol Operations Report: Traffic Accidents Community Total by District	Pg 17
Patrol Operations: Parking Enforcement, Abandoned Vehicles, House Checks, Business Checks, SIFA/1037 & Open Doors	Pg 18
Financial Information	Pg 19
Overtime Analysis	Pg 20
Overtime 2 year Comparison	Pg 21

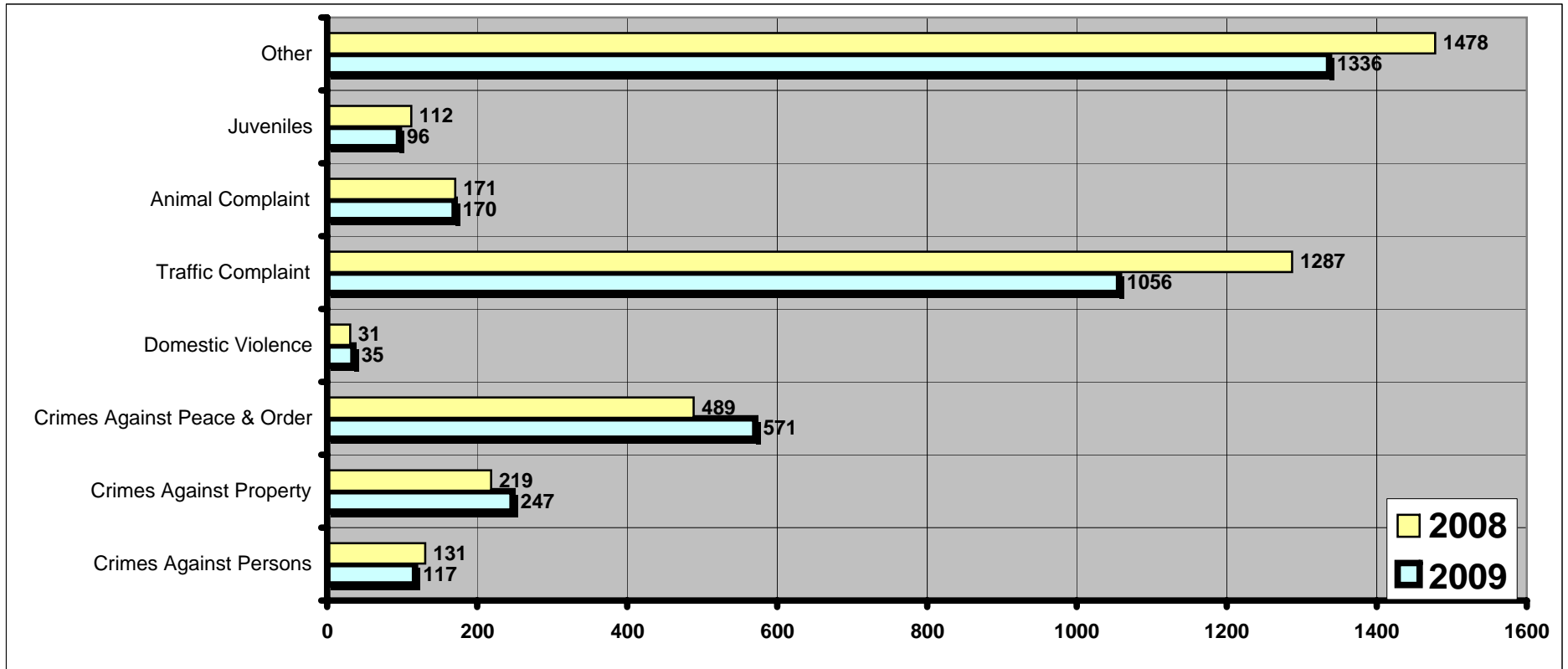
\*\*\*\*KEY:      RP = Reporting Period                      YTD = Year to Date  
                  LYRP = Last Year Reporting Period              LYTD = Last Year to Date  
                  LRP = Last Reporting Period

**IMPORTANT NOTE: The numbers reflected in this report are based specifically on total actuals and are NOT reflective of per capita statistics.**

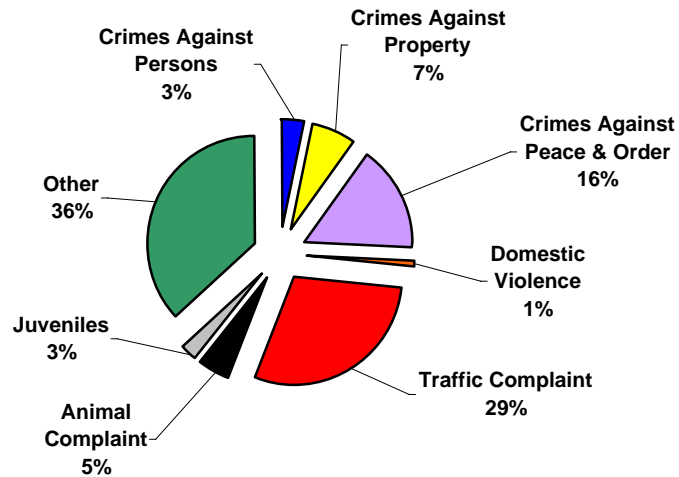
## Reporting Period Crime/Incident Reports: Total by Category And District

	Crimes Against Persons	Crimes Against Property	Crimes Against Peace & Order	Domestic Violence	Traffic Complaint	Animal Complaint	Juveniles	Other	2009	2008	% Change
District 1/Grid 1	4	7	19	4	12	4	3	50	103	96	7.3%
District 1/Grid 2	17	12	69	4	34	18	6	96	256	269	-4.8%
District 1/Grid 3	3	1	9	0	3	0	1	13	30	20	50.0%
District 1/Grid 4	1	8	21	1	60	9	2	59	161	126	27.8%
District 1/Grid 10	0	0	0	0	0	0	0	0	0	0	0.0%
District 1/Grid 11	10	30	42	0	187	4	0	141	414	502	-17.5%
District 1/Grid 12	1	1	2	0	14	1	0	6	25	30	-16.7%
District 2/Grid 5	12	63	73	3	275	23	1	156	606	685	-11.5%
District 2/Grid 16	0	0	0	0	0	0	0	0	0	0	0.0%
District 3/Grid 6	15	16	82	5	97	29	4	275	523	570	-8.2%
District 4/Grid 7	17	27	87	4	76	56	6	138	411	347	18.4%
District 4/Grid 15	0	0	0	0	0	0	0	0	0	0	0.0%
District 5/Grid 8	9	20	58	4	81	11	7	133	323	394	-18.0%
District 6/Grid 9	26	62	106	10	212	15	66	235	732	804	-9.0%
District 6/Grid 13	1	0	0	0	1	0	0	1	3	6	-50.0%
District 6/Grid 14	1	0	3	0	0	0	0	0	4	0	0.0%
Other	0	0	0	0	4	0	0	33	37	69	-46.4%
<b>TOTALS</b>	<b>117</b>	<b>247</b>	<b>571</b>	<b>35</b>	<b>1056</b>	<b>170</b>	<b>96</b>	<b>1336</b>	<b>3628</b>	<b>3918</b>	<b>-7.4%</b>

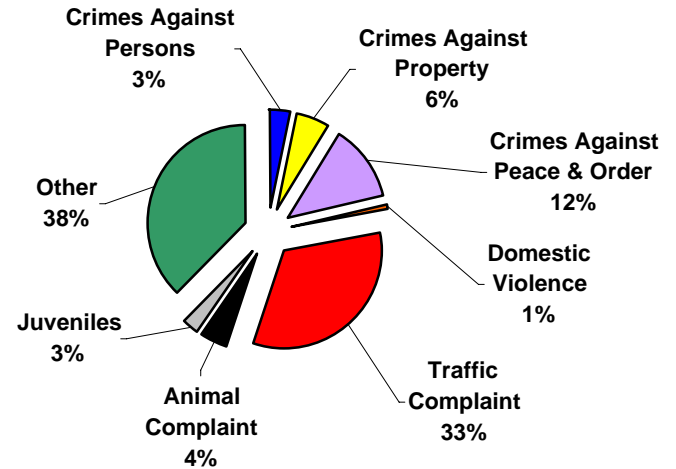
## Reporting Period Crime/Incident Reports: Total by Category



**2009**



**2008**



## Reporting Period Property Stolen & Recovered Report: Totals

### Value of Property Stolen

	2009	2008
District 1/Grid 1	\$ 5,169.00	\$ 1,070.00
District 1/Grid 2	\$ 4,707.00	\$ 4,240.00
District 1/Grid 3	\$ -	\$ 20.00
District 1/Grid 4	\$ 697.00	\$ 1,870.00
District 1/Grid 10	\$ 190.00	\$ -
District 1/Grid 11	\$ 48,053.00	\$ 94,410.00
District 1/Grid 12	\$ 24,000.00	\$ 40,465.00
District 2/Grid 5	\$ 336.00	\$ 2,523.00
District 2/Grid 16	\$ 1,803.00	\$ -
District 3/Grid 6	\$ 3,239.00	\$ 492.00
District 4/Grid 7	\$ 6,761.00	\$ 4,193.00
District 4/Grid 15	\$ -	\$ -
District 5/Grid 8	\$ 7,156.00	\$ 1,815.00
District 6/Grid 9	\$ 6,662.00	\$ 11,190.00
District 6/Grid 13	\$ -	\$ -
District 6/Grid 14	\$ -	\$ -
<b>TOTALS</b>	<b>\$ 108,773.00</b>	<b>\$ 162,288.00</b>

### Value of Property Recovered

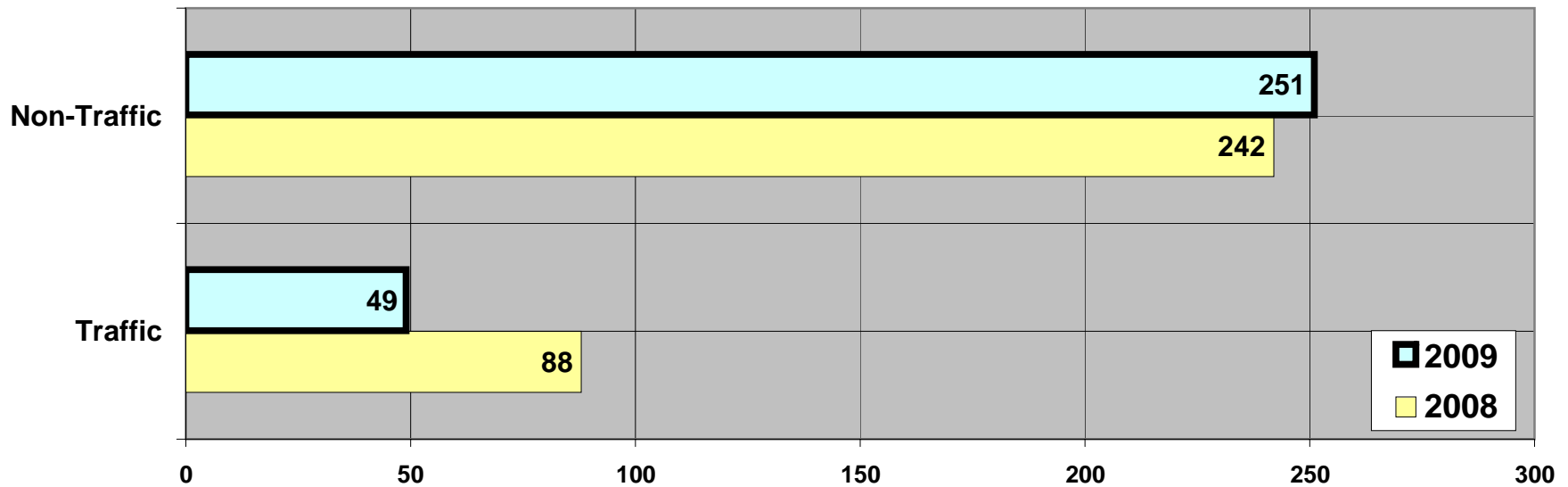
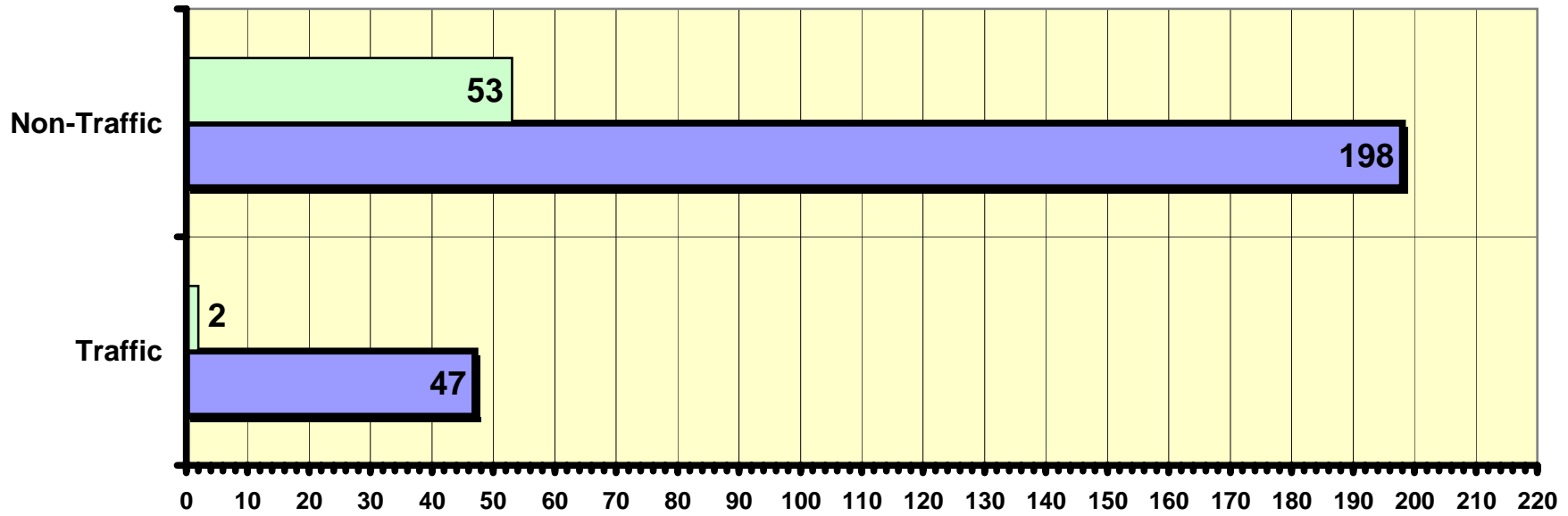
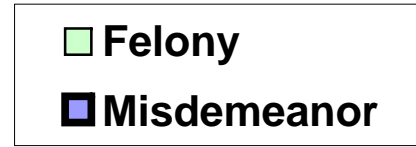
	2009	2008
District 1/Grid 1	\$ 5,001.00	\$ 100.00
District 1/Grid 2	\$ -	\$ 392.00
District 1/Grid 3	\$ -	\$ -
District 1/Grid 4	\$ 5.00	\$ 30.00
District 1/Grid 10	\$ -	\$ -
District 1/Grid 11	\$ 1,700.00	\$ 1,560.00
District 1/Grid 12	\$ -	\$ 20,000.00
District 2/Grid 5	\$ -	\$ 117.00
District 2/Grid 16	\$ -	\$ -
District 3/Grid 6	\$ 484.00	\$ 5.00
District 4/Grid 7	\$ 1,834.00	\$ 1,184.00
District 4/Grid 15	\$ -	\$ -
District 5/Grid 8	\$ 536.00	\$ -
District 6/Grid 9	\$ 575.00	\$ 860.00
District 6/Grid 13	\$ -	\$ -
District 6/Grid 14	\$ -	\$ -
<b>TOTALS</b>	<b>\$ 10,135.00</b>	<b>\$ 24,248.00</b>

## Reporting Period Officers Injured, Killed or Assaulted: Totals

	2009	2008	2007	2006
Use of Force Incidents	3	11	15	10
Officers Involved	6	18	25	14
Officers Injured	1	0	0	1
Officers Killed	0	0	0	0
Officers Assaulted	0	0	1	0
Subjects Involved	2	9	15	9
Subjects Injured	0	0	0	1

# Reporting Period Enforcement Action: Total

## State/Criminal Arrests



# Reporting Period Enforcement Action: Total

## State/Criminal Arrests

VIOLATION	Misdemeanor	Felony	2009 Total	2008 Total
Disorderly Conduct	71	0	71	52
Possession of THC w/Intent to Deliver	0	3	3	0
Possession of THC	7	0	7	6
Possession of Drug Paraphernalia	8	0	8	6
Sexual Assault of a Child	0	0	0	2
Manufacture/Deliver THC	0	1	1	0
Obtain Controlled Substance by Fraud	0	1	1	0
Child Abuse	0	3	3	5
Possession of Cocaine	0	1	1	0
Sexual Intercourse with Child age 16 or older	3	0	3	4
Intentionally Contribute to the Delinquency of a Minor	3	0	3	0
Endanger Safety	1	0	1	0
Possession/Manufacture/Deliver Schedule I & II Narcotics	1	9	10	2
Child Neglect	3	0	3	1
Substantial Battery	0	1	1	0
Battery	32	0	32	19
Bailjumping	6	6	12	4
Credit Card Theft by Acquisition	0	1	1	0
Theft/Theft Party to the Crime	17	0	17	23
Violate Harassment/Restraining Order	1	0	1	0
Burglary/Burglary Party to the Crime	0	5	5	4
Domestic Abuse No Contact Violation	1	0	1	1
False Imprisonment	0	0	0	1
Forgery	0	3	3	1
Criminal Trespass to Property	2	0	2	2
4th Degree Sexual Assault	1	0	1	0
Suffocation/Strangulation	0	1	1	0
Intimidation of a Victim/Witness	0	0	0	3
Child Abuse with Intent to Cause Great Harm	0	1	1	0
Expose Child to Harmful Materials	0	2	2	0
Resisting/Obstructing an Officer	13	0	13	9
Repeated Sexual Assault	0	1	1	0
Obtain Credit/Money/Goods/Service	0	0	0	1

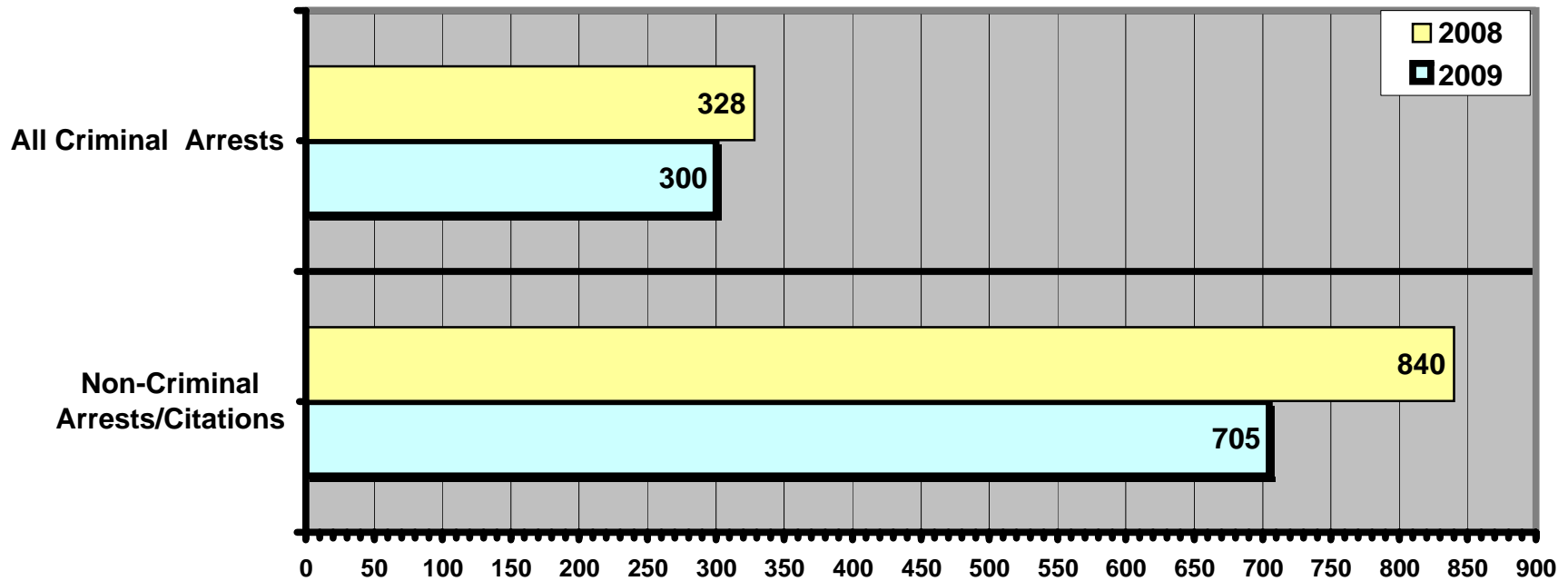
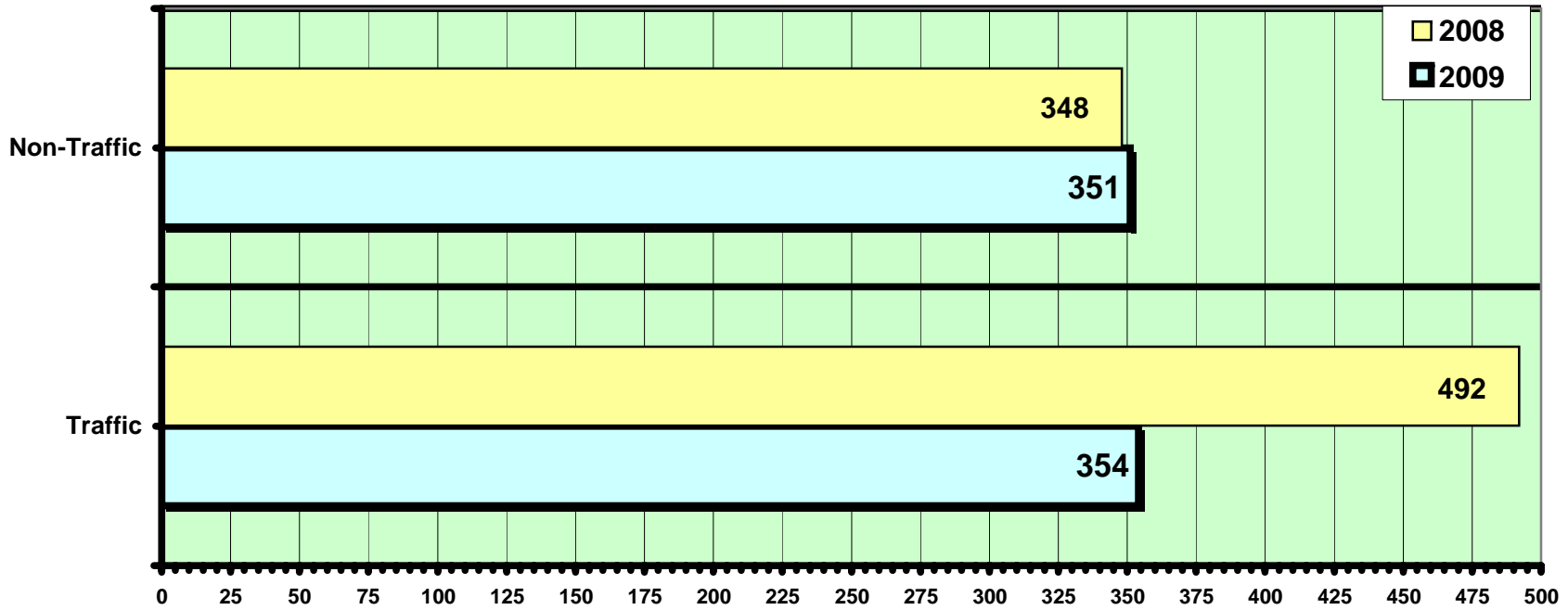
# Reporting Period Enforcement Action: Total

## State/Criminal Arrests (continued)

VIOLATION	Misdemeanor	Felony	2009 Total	2008 Total
2nd Degree Sexual Assault of A Child	1	10	11	0
1st Degree Sexual Assault of A Child	0	1	1	0
Alter identifying Marks	0	0	0	1
Criminal Damage to Property	17	0	17	42
Battery to Police Officer	0	0	0	2
First Degree Reckless Endangerment	0	0	0	1
Carry Concealed Weapon	1	0	1	1
Receive Stolen Property	2	2	4	4
Dangerous Weapons Other Than Firearms on School Premises	3	0	3	1
Violation of Court Order	0	0	0	2
Possession of Switchblade	0	0	0	2
Harassment	0	0	0	1
Issue Worthless Checks	1	0	1	0
Mistreatment of Animals	0	0	0	2
Sexual Assault of Mentally Ill Victim	0	0	0	1
Lewd & Lascivious Behavior	0	0	0	2
Negligent Handling of Burning Materials	0	0	0	1
Battery to Medical Care Provider	0	0	0	1
Possession of Heroin	0	0	0	1
Computer Message Threats	0	0	0	1
Expose Genitals to Child	0	0	0	2
Runaway	0	0	0	3
Possession of Firearm by Felon	0	0	0	1
Warrant Arrests	3	0	3	22
Operating After Revocation	28	1	29	51
Operating MV While Intoxicated	7	0	7	16
Operating MV While Intoxicated - PAC	7	0	7	14
Fleeing Officer	1	1	2	0
Operate w/o Valid Driver's License	4	0	4	5
Operate Motor Vehicle w/o Owner's Consent	0	1	1	2
<b>Totals</b>	<b>245</b>	<b>55</b>	<b>300</b>	<b>328</b>

# Reporting Period Enforcement Action: Totals

## Non-Criminal Arrests/Citations



**Reporting Period Enforcement Action: Total**  
**Non-Criminal Arrests/Citations**

<b>VIOLATION</b>	<b>2009 Total</b>	<b>2008 Total</b>
Disorderly Conduct	69	42
Smoking on School Property	1	0
Resisting/Obstructing an Officer	9	5
Underage Possession of Tobacco	12	20
Furnish Tobacco to Juvenile	1	2
Underage Possession/Consumption of Alcohol	59	60
Furnish Alcohol to Underage Person	16	11
Theft/Attempted Theft	21	14
Deface/Destroy Property/Park Property	10	12
Cause Loud/Unnecessary Noise	8	16
Habitual Truancy	5	4
Purchase Alcohol from Unauthorized Dealer	1	0
Unlawful Use of Phone/Computer System	2	0
Possession of Marijuana	13	23
Possession of Drug Paraphernalia	9	11
Harassment	0	2
Truancy	50	45
Curfew Violation	15	20
Failure to Keep Cat/Dog Restrained	9	9
Harbor Animal/Public Nuisance	2	5
Junk Items Remain After Notification	1	0
Trespassing to Property	6	1
Fail to Keep Conditions Clean for Animal	1	0
Tavern Open After Hours	2	0
Fraud to Hotel/Restaurant Keeper/Taxi	2	1
Littering	5	2
Maintain Recreational Fire w/o Permit	0	1
Possession/Use of Illegal Fireworks	2	1
Front Porch In Disrepair After Notification	6	0
Keep Vicious Animal	0	1
Unlawful Maintenance of Property	6	5
Sell Alcohol Without License	0	2
Fail to License Dog/Cat	4	1
Truancy - Parental Control	0	1
Unlawful Discharge of Bow & Arrow	0	1
Animal Bite - Order to Quarantine	0	2
Removal of Water Meter	1	0
Adult Permit Underage Alcohol Consumption	1	0

# Reporting Period Enforcement Action: Total

## Non-Criminal Arrests/Citations (Continued)

VIOLATION	2009 Total	2008 Total
Begging	1	0
Failure to Obtain Permit After Notification	1	0
Operating MV While Intoxicated	8	13
Operating MV While Intoxicated - PAC	6	10
Failure to Stop at Stop Sign	18	33
Operating After Suspension	63	92
Operating After Revocation	8	9
Non-Registration	28	54
Expired Registration	0	1
Seatbelt Violation	52	52
Child Safety Seat Violation	2	1
Hit & Run	8	4
Display Unauthorized Registration	6	2
Failure to Display Plates	2	1
Failure to Obey Traffic Signal	0	3
Operate Motor Vehicle w/o Required Lights	1	1
Operate MV w/o Valid Driver's License	15	21
Operate Motorcycle w/o MC License	1	1
Operate MV After Registration Suspended/Revoked	38	72
Defective Head/Taillamp	2	12
Operate Motor Vehicle w/o Adequate Muffler	1	1
Driving too Fast for Conditions	2	7
Failure to Yield Right of Way	4	9
Automobile Following too Closely	0	1
Failure to Report Accident	7	3
Operating Left of the Center Line	3	2
Inattentive Driving	5	5
Violate Red Traffic Signal	4	0
Unsafe Lane Deviation	3	0
Operate Motor Vehicle by Permittee w/o Instructional Permit	1	0
Unsafe Backing of Motor Vehicle	4	3
MV Windows Not Reasonably Clean	1	0
Operate Motor Vehicle w/o Stopping Lights	2	0
Passing in No Passing Zone	0	1
Ride Bike Illegally	1	0
Operate MV w/o Carrying Driver's License	0	1
Permit Unauthorized Minor to Drive	1	0
Underage Transport of Alcohol	2	2

## Reporting Period Enforcement Action: Total

### Non-Criminal Arrests/Citations (Continued)

VIOLATION	2009 Total	2008 Total
Improper Turn	0	3
Permit Unauthorized Person to Drive	2	2
Speeding on Private Property	1	4
Failure to Stop at Stop Sign on Private Property	1	8
Unnecessary Blowing of Horn	2	1
Operate Bike/Blades w/o Light at Night	3	1
Speeding	30	54
Disorderly Conduct w/Motor Vehicle	7	15
Fail to Attach Sticker/Decal	0	1
Falsify Accident Report	0	1
Speed in School Zone	0	1
Operate Motor Vehicle by Permittee w/o Parent	1	0
Deviating from Lane of Traffic	1	0
Vehicle Owner's Liability for FSA	1	0
Fail to Notify DMV of Address/Name Change	1	0
Open Intoxicants in Motor Vehicle	4	6
Violation of License Restriction	1	3
Knowingly Operate MV w/o Valid Driver's License - Causing Injury	0	1
Stopping/Standing in Intersection	0	1
Truck Flashing Amber Lamp Restriction	0	1
<b>Totals</b>	<b>705</b>	<b>840</b>

## Patrol Operations: Extra Patrol Total Hours by District & Location

Location	Dist 1 Grid 1	Dist 1 Grid 2	Dist 1 Grid 3	Dist 1 Grid 4	Dist 1 Grid 10	Dist 1 Grid 11	Dist 1 Grid 12	Dist 2 Grid 5	Dist 2 Grid 16	Dist 3 Grid 6	Dist 4 Grid 7	Dist 4 Grid 15	Dist 5 Grid 8	Dist 6 Grid 9	Dist 6 Grid 13	Dist 6 Grid 14	2009	2008
325 McKinley St														45.33			45.33	48
1115 Thurke Av													51.75				51.75	56.33
923 Minnesota Av														25			25	11.93
Minnesota Av/Blackbird St																	0	2
Swan Dr/Robin Dr		6.58															6.58	6.08
Harrison Ct/Park Ridge La																	0	22
Village Park																	0	48.51
LeMieux Park																	0	33.33
Gaslight Terrace																	0	1.42
631 Wisconsin Av																	0	11.42
1504 Minnesota Av																	0	0.92
280 Garfield St																	0	2
403 Wisconsin Av																	0	4.42
Prospect Av/Winnebago St								1.58									1.58	17.08
2 Harrison St										6.25							6.25	0
35 McKinley St											0.5						0.5	0
Harrison St/Wisconsin Av										3							3	0
Wisconsin Av/Winnebago St										0.5							0.5	0
Minnesota Av/Anne St											5.17						5.17	0
Thurke Av/Broadway St													5.09				5.09	0
1050 Lakeshore Dr								3.75									3.75	0
N Rolling Meadows Dr/Winnebago St							7.5										7.5	0
Chapman Av/North St											6.67						6.67	0
Twin Lakes Dr	1.08																1.08	0
N Pioneer Rd/Mockingbird La						13.25											13.25	0
Gaslight Dr/Chickadee Ct		2.5															2.5	0
Minnesota Av/Garfield St										16.83							16.83	0
565 N Pioneer Rd						0.83											0.83	0
<b>TOTAL HOURS</b>	1.08	9.08	0	0	0	14.08	7.5	5.33	0	26.58	12.34	0	56.84	70.33	0	0	203.16	265.44

**NOTE: Addresses or intersections are used for activity tracking purposes and may not be reflective of the total area monitored.**

## Patrol Operations: Extra Patrol Detail Summary - **Contacts**

Addresses	Cause/Summary	Contacts
325 McKinley St	Standing Extra Patrol at Horace Mann High School	7
1115 Thurke Av	Standing Extra Patrol at Friendship Learning Center	6
923 Minnesota Av	Standing Extra Patrol at Early Learning Center	17
Swan Dr/Robin Dr	Traffic violations in mobile home community	0
Prospect Av/Winnebago St	Vehicles Failing to make complete stop at stop sign to turn right onto Winnebago St	3
2 Harrison St	Citizen request due to concerns of vandalism	0
35 McKinley St	Citizen request due to concerns of vandalism	0
Harrison St/Wisconsin Av	Monitor activity in area	0
Wisconsin Av/Winnebago St	Per request of business in the area	0
Minnesota Av/Anne St	At request by residents in area due to safety concerns	0
Thurke Av/Broadway St	Vehicles failing to stop at stop sign	3
1050 Lakeshore Dr	Monitor area for trespassers	0
N Rolling Meadows Dr/Winnebago St	Monitor activity in area	0
Chapman Av/North St	Vehicles failing to stop at stop sign	1
Twin Lakes Dr	Thefts of outdoor property in area	0
N Pioneer Rd/Mockingbird La	Suspicious Activity in the area	0
Gaslight Dr/Chickadee Ct	Traffic violations in mobile home community	1
Minnesota Av/Garfield St	Suspicious Activity in the area	0
565 N Pioneer Rd	Suspicious Activity in the area	0

**NOTE: Addresses or intersections are used for activity tracking purposes and may not be reflective of the total area monitored.**

### Patrol Operations: Directed Area Patrol Totals Hours by District & Location

Location	Dist 1 Grid 1	Dist 1 Grid 2	Dist 1 Grid 3	Dist 1 Grid 4	Dist 1 Grid 10	Dist 1 Grid 11	Dist 1 Grid 12	Dist 2 Grid 5	Dist 2 Grid 16	Dist 3 Grid 6	Dist 4 Grid 7	Dist 4 Grid 15	Dist 5 Grid 8	Dist 6 Grid 9	Dist 6 Grid 13	Dist 6 Grid 14	2009	2008
1050 Lakeshore Dr								8.33									8.33	0
1504 Minnesota Av																	0	18
333 McKinley St														89.9			89.92	0
Adams Av/McKinley St																	0	0
555 N Pioneer Rd																	0	0
565 N Pioneer Rd																	0	0
Gaslight Terrace																	0	0
<b>Totals</b>	0	0	0	0	0	0	0	8.33	0	0	0	0	0	89.92	0	0	98.25	18

**NOTE: Addresses or intersections are used for activity tracking purposes and may not be reflective of the total area monitored.**

### Patrol Operations: Directed Area Patrol Detail Summary - CONTACTS

Addresses	Cause/Summary	Contacts
1050 Lakeshore Dr	Patrol Fire Scene	0
333 McKinley St	Monitor area for suspicious activity during water tower repairs	0

## Patrol Operations: Traffic Accidents Community Total

	Reportable	Non-Reportable	2009	2008	% Change	Hit & Run	Injuries	Fatalities	2009	2008	% Change
District 1/Grid 1	0	3	3	1	200.0%	0	0	0	0	0	0.0%
District 1/Grid 2	3	1	4	4	0.0%	2	0	0	2	0	200.0%
District 1/Grid 3	0	0	0	1	-100.0%	0	0	0	0	0	0.0%
District 1/Grid 4	2	2	4	2	100.0%	2	0	0	2	0	200.0%
District 1/Grid 10	0	0	0	0	0.0%	0	0	0	0	0	0.0%
District 1/Grid 11	9	3	12	17	-29.4%	3	0	0	3	2	50.0%
District 1/Grid 12	0	0	0	0	0.0%	0	0	0	0	0	0.0%
District 2/Grid 5	13	4	17	25	-32.0%	2	0	0	2	2	0.0%
District 2/Grid 16	0	0	0	0	0.0%	0	0	0	0	0	0.0%
District 3/Grid 6	9	0	9	16	-43.8%	2	0	0	2	3	-33.3%
District 4/Grid 7	8	0	8	8	0.0%	3	0	0	3	4	-25.0%
District 4/Grid 15	0	0	0	0	0.0%	0	0	0	0	0	0.0%
District 5/Grid 8	4	3	7	11	-36.4%	5	0	0	5	0	500.0%
District 6/Grid 9	5	3	8	17	-52.9%	4	0	0	4	5	-20.0%
District 6/Grid 13	1	0	1	0	100.0%	0	0	0	0	0	0.0%
District 6/Grid 14	0	0	0	0	0.0%	0	0	0	0	0	0.0%
Other	0	0	0	0	0.0%	0	0	0	0	0	0.0%
<b>TOTALS</b>	54	19	73	102	-28.4%	23	0	0	23	16	43.8%

**Patrol Operations: Parking Enforcement, Abandoned Vehicles, House Checks, Business Checks,  
Business Checks, SIFA/1037 (Self Initiated Field Activity/Suspicious) & Open Doors**

Parking Enforcement				House Checks			Abandoned Vehicles		
DISTRICTS	2009	2008	% Change	2009	2008	% Change	2009	2008	% Change
District 1/Grid 1	0	0	0%	140	139	1%	0	2	-200%
District 1/Grid 2	0	3	-300%	141	192	-27%	1	5	-80%
District 1/Grid 3	0	0	0%	0	0	0%	0	0	0%
District 1/Grid 4	2	8	-75%	14	27	-48%	1	2	-50%
District 1/Grid 10	0	0	0%	0	0	0%	0	0	0%
District 1/Grid 11	20	10	100%	0	0	0%	2	6	-67%
District 1/Grid 12	0	0	0%	0	0	0%	0	0	0%
District 2/Grid 5	5	29	-83%	53	68	-22%	2	5	-60%
District2/Grid 16	0	0	0%	0	0	0%	0	0	0%
District 3/Grid 6	7	45	-84%	93	21	343%	8	7	14%
District 4/Grid 7	7	55	-87%	10	186	-95%	4	9	-56%
District 4/Grid 15	0	0	0%	0	0	0%	0	0	0%
District 5/Grid 8	17	104	-84%	134	91	47%	8	6	33%
District 6/Grid 9	76	86	-12%	6	73	-92%	8	13	-38%
District 6/Grid 13	0	0	0%	0	0	0%	0	1	-100%
District 6/Grid 14	0	0	0%	0	0	0%	0	0	0%
Other	0	0	0%	0	0	0%	0	0	0%
<b>TOTALS</b>	<b>134</b>	<b>340</b>	<b>-61%</b>	<b>591</b>	<b>797</b>	<b>-26%</b>	<b>34</b>	<b>56</b>	<b>-39%</b>

Business Checks				SIFA/1037			Open Doors		
	2009	2008	% Change	2009	2008	% Change	2009	2008	% Change
<b>Totals</b>	<b>5754</b>	<b>3697</b>	<b>56%</b>	<b>102</b>	<b>140</b>	<b>-27%</b>	<b>52</b>	<b>41</b>	<b>27%</b>

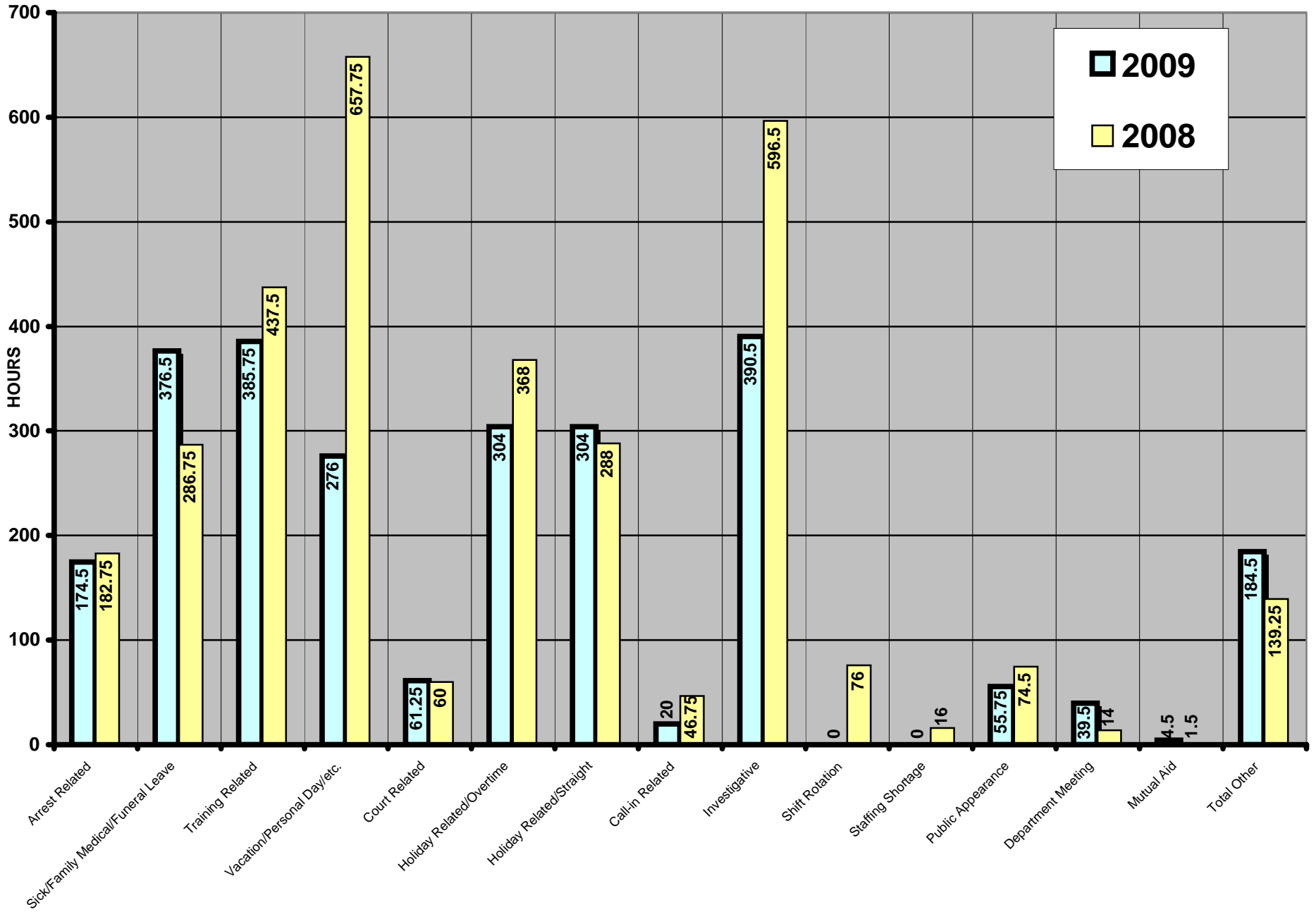
## Financial Information

Municipal Court Fines/Forfeitures	2009	2008
January	\$ 3,808.50	\$ 2,335.87
February	\$ 3,541.79	\$ 3,238.00
March	\$ 2,166.90	\$ 3,577.25
April	\$ 1,806.30	\$ 2,222.30
May	\$ 4,408.76	\$ 1,965.66
June	\$ 2,471.90	\$ 2,102.50
July	\$ 2,222.66	\$ 1,356.00
August	\$ 2,664.70	\$ 2,310.00
September	\$ 2,607.42	\$ 3,435.53
October	\$ 2,492.80	\$ 4,179.84
November	\$ 1,413.40	\$ 4,053.57
December	\$ 2,629.80	\$ 2,921.60
<b>Year to Date Amount</b>	<b>\$ 32,234.93</b>	<b>\$ 33,698.12</b>

Fond du Lac Clerk of Courts Fines/Forfeitures	2009	2008
January	\$ -	\$ -
February	\$ 310.15	\$ -
March	\$ 322.87	\$ -
April	\$ -	\$ -
May	\$ -	\$ 112.50
June	\$ 250.02	\$ -
July	\$ -	\$ -
August	\$ -	\$ -
September	\$ -	\$ -
October	\$ 22.50	\$ -
November	\$ 15.00	\$ 37.50
December	\$ -	\$ -
<b>Year to Date Amount</b>	<b>\$920.54</b>	<b>\$ 150.00</b>

Other Revenue	2009	2008
Parking Tickets	\$ 4,350.00	\$ 6,340.00
Bike Licenses	\$ 120.00	\$ 147.00
Operators Licenses	\$ 1,327.00	\$ 825.00
Vehicle Lockout Fees	\$ 930.00	\$ 960.00
Copies	\$ 530.87	\$ 208.17
Miscellaneous	\$ 436.00	\$ 267.75
<b>Totals</b>	<b>\$ 7,693.87</b>	<b>\$ 8,747.92</b>

# OVERTIME ANALYSIS



## OVERTIME COMPARISON

	2009	2008
Arrest Related	174.5	182.75
Sick/Family Medical/Funeral Leave	376.5	286.75
Training Related	385.75	437.5
Vacation/Personal Day/etc.	276	657.75
Court Related	61.25	60
Holiday Related/Overtime	304	368
Holiday Related/Straight	304	288
Call-in Related	20	46.75
Investigative	390.5	596.5
Shift Rotation	0	76
Staffing Shortage	0	16
Public Appearance	55.75	74.5
Department Meeting	39.5	14
Mutual Aid	4.5	1.5
Total Other	184.5	139.25
<b>Total Overtime Hours</b>	<b>2576.75</b>	<b>3245.25</b>

Reason By Percent	2009	2008
Arrest Related	6.77%	5.63%
Sick/Family Medical Leave/Funeral Leave	14.61%	8.84%
Training Related	14.97%	13.48%
Vacation/Personal Day/etc.	10.71%	20.27%
Court Related	2.38%	1.85%
Holiday Related/Overtime	11.80%	11.34%
Holiday Related/Straight	11.80%	8.87%
Call-in Related	0.78%	1.44%
Investigative	15.15%	18.38%
Shift Rotation	0.00%	2.34%
Staffing Shortage	0.00%	0.49%
Public Appearance	2.16%	2.30%
Department Meeting	1.53%	0.43%
Mutual Aid	0.17%	0.05%
Total Other	7.16%	4.29%
<b>Total Overtime Hours</b>	<b>100.00%</b>	<b>100.00%</b>

**OVERTIME TAKEN AS PAY**

**1354.00 Hrs**

**OVERTIME TAKEN AS COMP**

**1222.75 Hrs**

**Note: Previous years' overtime analysis included only that taken in overtime pay.**