

# Annual Report



2008

## TABLE OF CONTENTS

Reporting Period Crime/Incident Reports: Total by Category & District	Pg 3
Reporting Period Crime/Incident Reports: Total by Category	Pg 4
Reporting Period Property Stolen & Recovered Report: Totals	Pg 5
Reporting Period Officers Injured, Killed or Assaulted: Totals	Pg 6
Reporting Period Enforcement Action: State/Criminal Arrest Totals	Pg 7-9
Reporting Period Enforcement Action: Traffic & Non-Traffic Totals	Pg 10
Reporting Period Enforcement Action: Ordinance Citation Totals	Pg 11-13
Patrol Operations: Extra Patrol Total Hours by District & Location	Pg 14
Patrol Operations: Extra Patrol Detail Summary	Pg 15
Patrol Operations: Directed Area Patrol Totals by District & Location/Detail Summary	Pg 16
Patrol Operations Report: Traffic Accidents Community Total by District	Pg 17
Patrol Operations: Parking Enforcement, Abandoned Vehicles, House Checks, Business Checks, SIFA/1037 & Open Doors	Pg 18
Financial Information	Pg 19
Overtime Analysis	Pg 20
Overtime 2 year Comparison	Pg 21

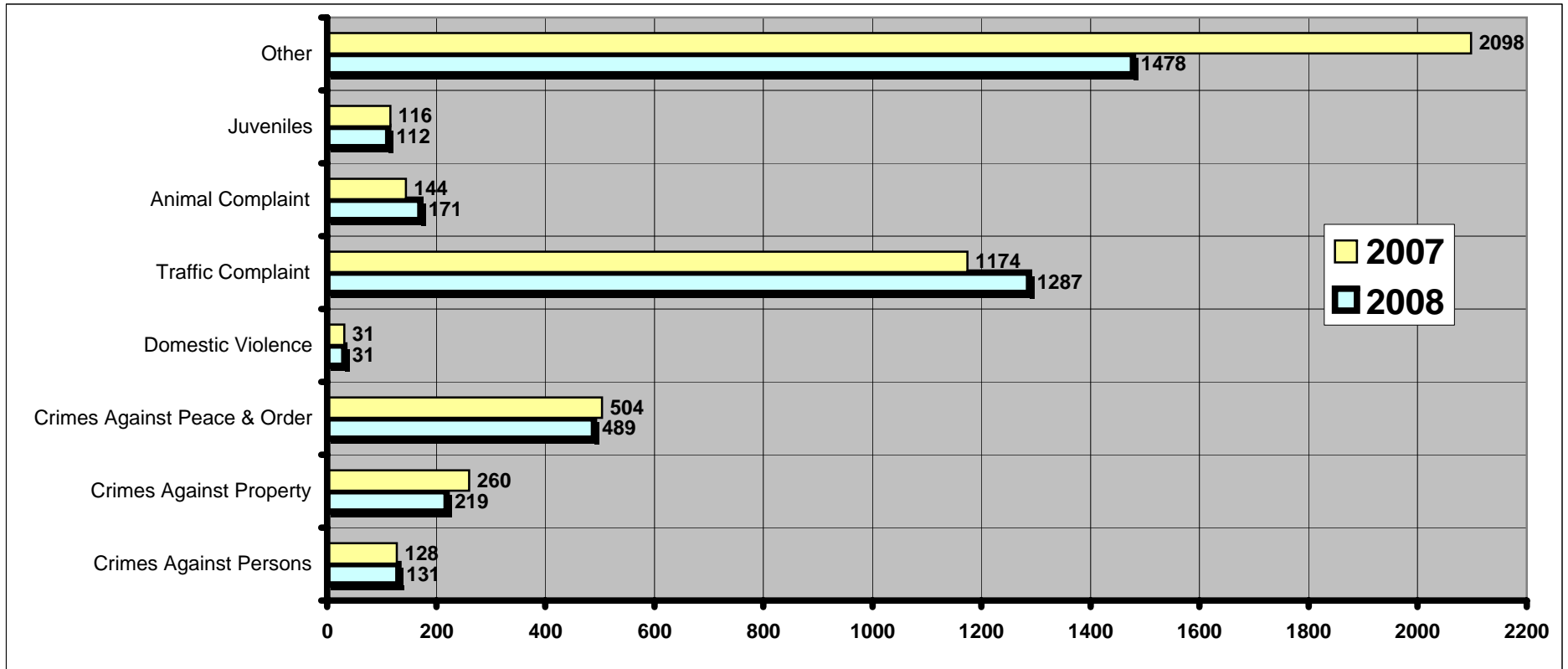
\*\*\*\*KEY:      RP = Reporting Period                      YTD = Year to Date  
                  LYRP = Last Year Reporting Period              LYTD = Last Year to Date  
                  LRP = Last Reporting Period

**IMPORTANT NOTE:** The numbers reflected in this report are based specifically on total actuals and are **NOT** reflective of per capita statistics.

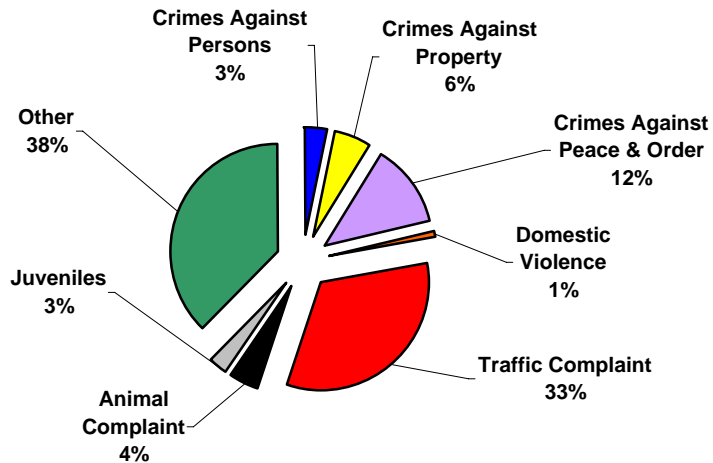
## Reporting Period Crime/Incident Reports: Total by Category And District

	Crimes Against Persons	Crimes Against Property	Crimes Against Peace & Order	Domestic Violence	Traffic Complaint	Animal Complaint	Juveniles	Other	2008	2007	% Change
District 1/Grid 1	2	4	19	1	17	9	1	43	96	252	-61.9%
District 1/Grid 2	15	21	59	2	49	17	9	97	269	617	-56.4%
District 1/Grid 3	1	2	3	0	5	0	0	9	20	43	-53.5%
District 1/Grid 4	4	5	14	3	37	10	1	52	126	183	-31.1%
District 1/Grid 10	0	0	0	0	0	0	0	0	0	0	0.0%
District 1/Grid 11	15	30	49	2	249	2	0	155	502	482	4.1%
District 1/Grid 12	0	1	4	0	15	0	0	10	30	28	7.1%
District 2/Grid 5	11	29	47	4	372	23	1	198	685	624	9.8%
District 2/Grid 16	0	0	0	0	0	0	0	0	0	41	-4100.0%
District 3/Grid 6	20	18	76	6	119	28	9	294	570	495	15.2%
District 4/Grid 7	15	29	72	2	74	50	7	98	347	494	-29.8%
District 4/Grid 15	0	0	0	0	0	0	0	0	0	0	0.0%
District 5/Grid 8	18	25	41	5	105	22	13	165	394	451	-12.6%
District 6/Grid 9	29	55	104	6	238	10	71	291	804	627	28.2%
District 6/Grid 13	0	0	1	0	2	0	0	3	6	7	-14.3%
District 6/Grid 14	0	0	0	0	0	0	0	0	0	4	-400.0%
Other	1	0	0	0	5	0	0	63	69	107	-35.5%
<b>TOTALS</b>	<b>131</b>	<b>219</b>	<b>489</b>	<b>31</b>	<b>1287</b>	<b>171</b>	<b>112</b>	<b>1478</b>	<b>3918</b>	<b>4455</b>	<b>-12.1%</b>

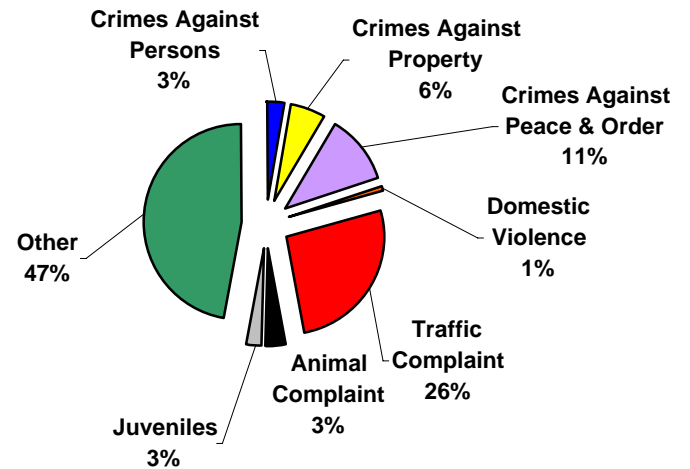
## Reporting Period Crime/Incident Reports: Total by Category



**2008**



**2007**



## Reporting Period Property Stolen & Recovered Report: Totals

### Value of Property Stolen

	2008	2007
District 1/Grid 1	\$ 1,070.00	\$ -
District 1/Grid 2	\$ 4,240.00	\$ 1,310.00
District 1/Grid 3	\$ 20.00	\$ 8.00
District 1/Grid 4	\$ 1,870.00	\$ 3,813.00
District 1/Grid 10	\$ -	\$ -
District 1/Grid 11	\$ 94,410.00	\$ 9,266.00
District 1/Grid 12	\$ 40,465.00	\$ -
District 2/Grid 5	\$ 2,523.00	\$ 6,507.00
District 2/Grid 16	\$ -	\$ 1,000.00
District 3/Grid 6	\$ 492.00	\$ 12,180.00
District 4/Grid 7	\$ 4,193.00	\$ 16,023.00
District 4/Grid 15	\$ -	\$ -
District 5/Grid 8	\$ 1,815.00	\$ 2,681.00
District 6/Grid 9	\$ 11,190.00	\$ 11,818.00
District 6/Grid 13	\$ -	\$ 19.00
District 6/Grid 14	\$ -	\$ -
<b>TOTALS</b>	<b>\$ 162,288.00</b>	<b>\$ 64,625.00</b>

### Value of Property Recovered

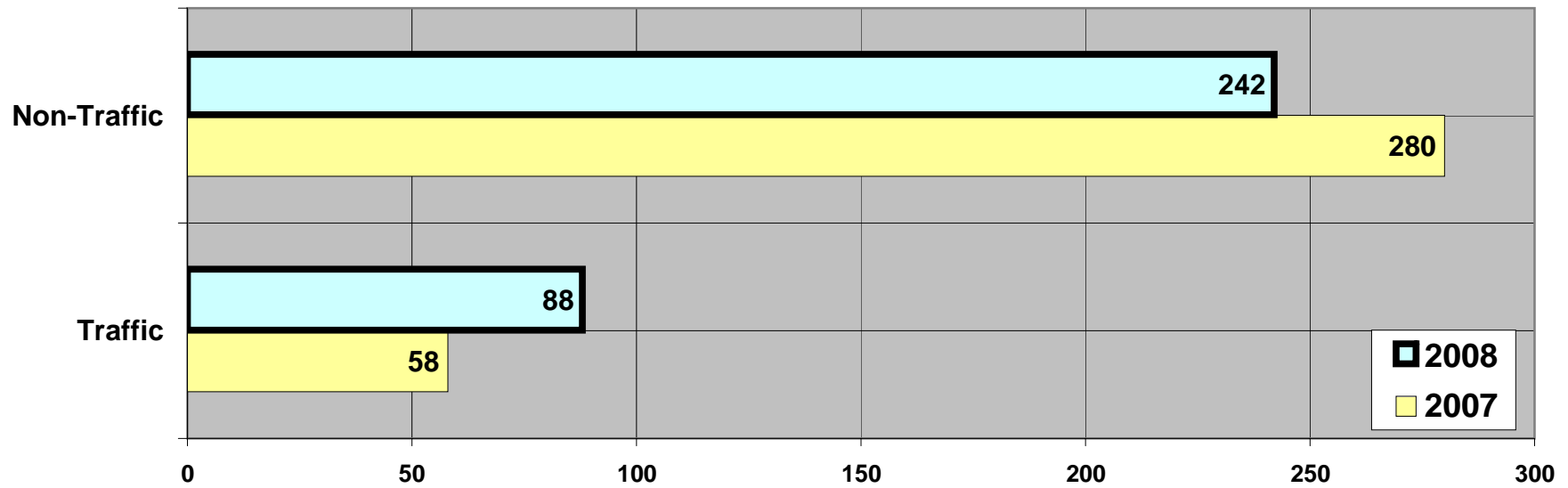
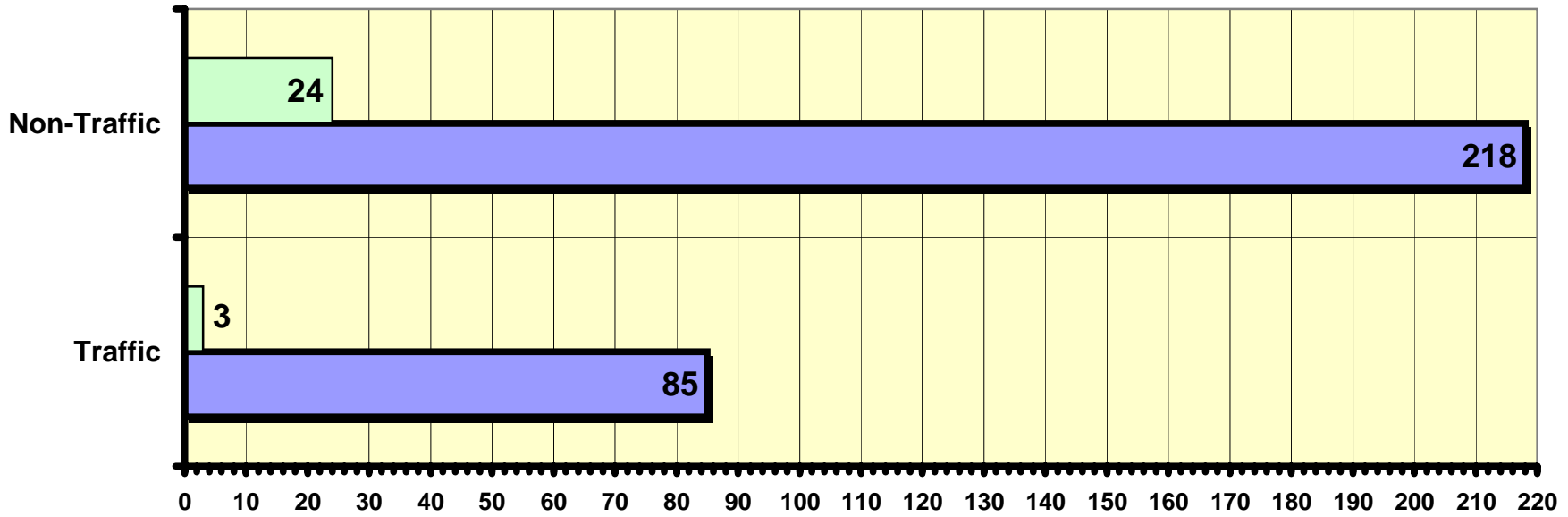
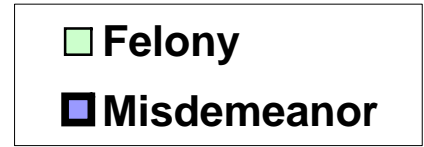
	2008	2007
District 1/Grid 1	\$ 100.00	\$ -
District 1/Grid 2	\$ 392.00	\$ 500.00
District 1/Grid 3	\$ -	\$ -
District 1/Grid 4	\$ 30.00	\$ -
District 1/Grid 10	\$ -	\$ -
District 1/Grid 11	\$ 1,560.00	\$ 1.00
District 1/Grid 12	\$ 20,000.00	\$ -
District 2/Grid 5	\$ 117.00	\$ 132.00
District 2/Grid 16	\$ -	\$ -
District 3/Grid 6	\$ 5.00	\$ 145.00
District 4/Grid 7	\$ 1,184.00	\$ 516.00
District 4/Grid 15	\$ -	\$ -
District 5/Grid 8	\$ -	\$ 3,801.00
District 6/Grid 9	\$ 860.00	\$ 362.00
District 6/Grid 13	\$ -	\$ -
District 6/Grid 14	\$ -	\$ -
<b>TOTALS</b>	<b>\$ 24,248.00</b>	<b>\$ 5,457.00</b>

## Reporting Period Officers Injured, Killed or Assaulted: Totals

	2008	2007	2006	2005
Use of Force Incidents	11	15	10	5
Officers Involved	18	25	14	13
Officers Injured	0	0	1	0
Officers Killed	0	0	0	0
Officers Assaulted	0	1	0	0
Subjects Involved	9	15	9	5
Subjects Injured	0	0	1	0

# Reporting Period Enforcement Action: Total

## State/Criminal Arrests



# Reporting Period Enforcement Action: Total

## State/Criminal Arrests

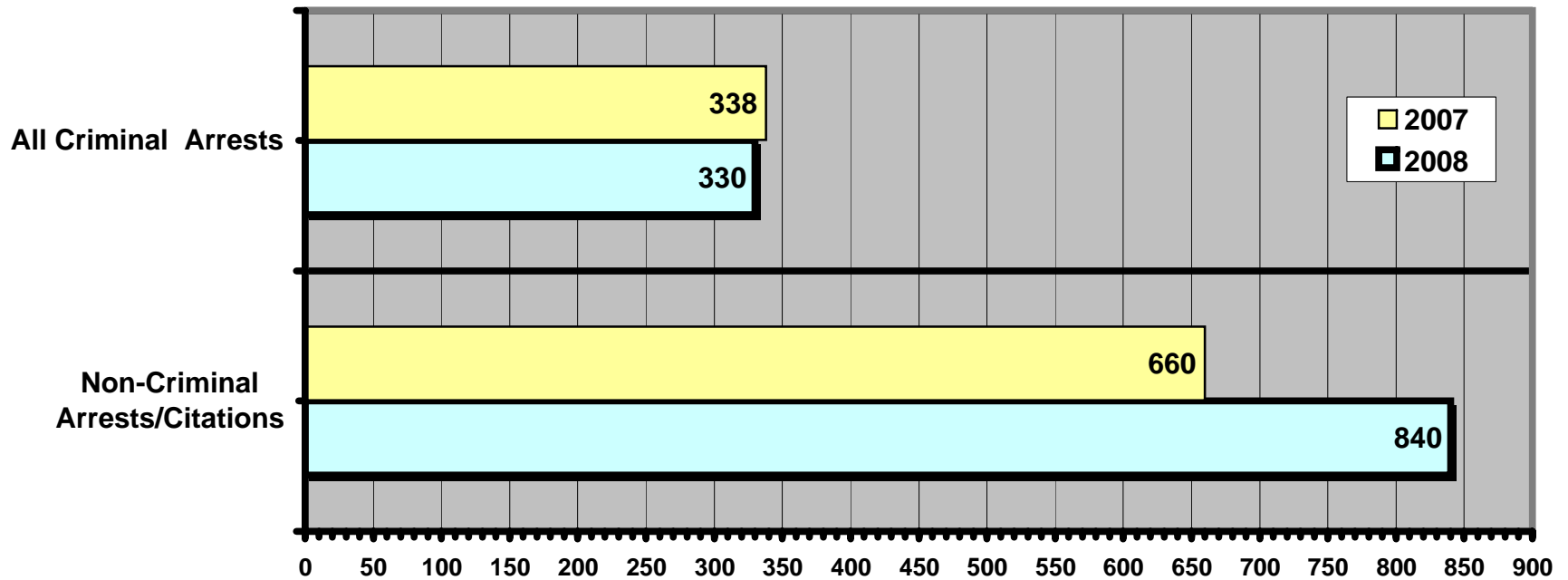
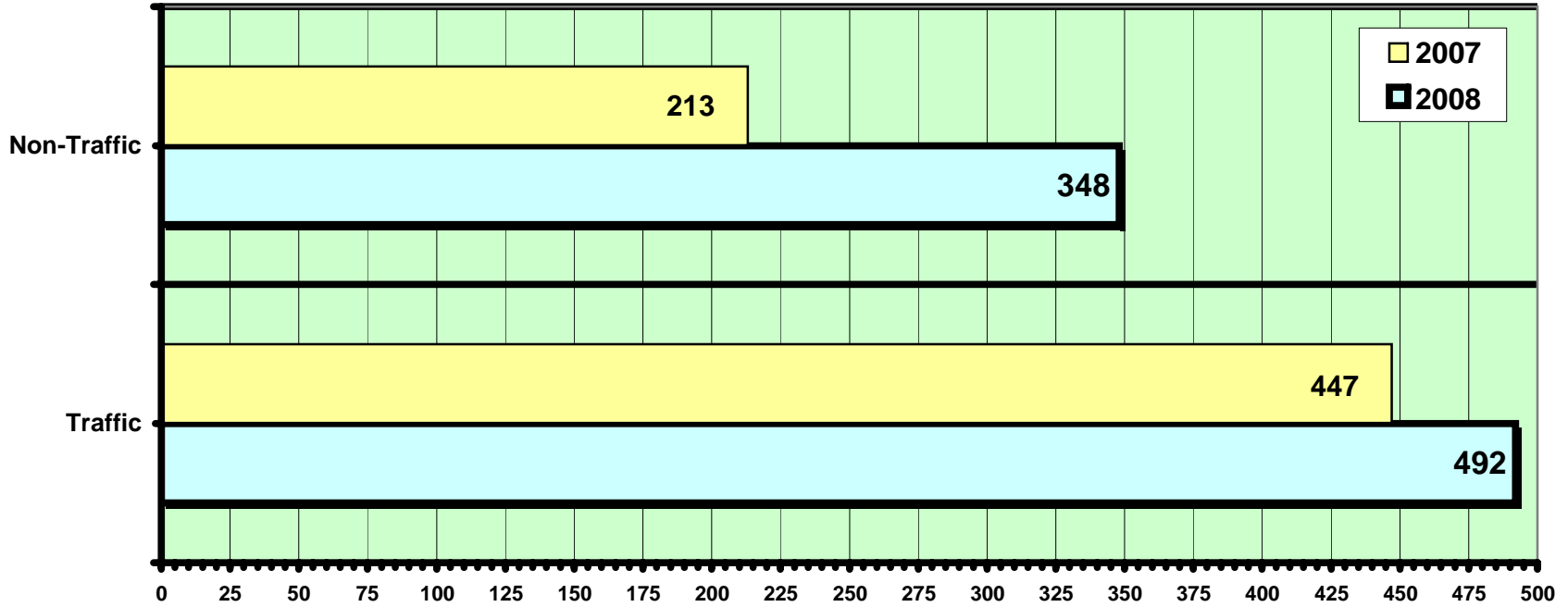
VIOLATION	Misdemeanor	Felony	2008 Total	2007 Total
Disorderly Conduct	52	0	52	49
Escape	0	0	0	1
Possession of Marijuana	4	2	6	3
Possession of Drug Paraphernalia	6	0	6	2
Sexual Assault of a Child	0	2	2	9
Sexual Assault of a Student by School Staff	0	0	0	10
Expose Child to Harmful Materials	0	0	0	3
Child Abuse	0	5	5	4
Child Enticement	0	0	0	4
Sexual Intercourse with Child age 16 or older	4	0	4	3
Intentionally Contribute to the Delinquency of a Child	0	0	0	4
Repeated Sexual Assault of a Child	0	0	0	4
Failure to Act - Sexual Assault	0	0	0	1
Interference with Custody	0	0	0	1
Aggravated Battery	0	0	0	2
Battery	19	0	19	15
Bailjumping	4	0	4	10
Violate Harrassment Injunction	0	0	0	1
Theft/Theft Party to the Crime	23	0	23	25
Underage Possession/Consumption of Alcohol	0	0	0	1
Burglary	4	0	4	2
Furnish Alcohol to Underage Person	0	0	0	4
False Imprisonment	0	1	1	3
Forgery - Uttering	0	1	1	3
Criminal Trespass to Property	2	0	2	2
Criminal Trespass to Dwelling	0	0	0	1
Exposing Genitals or Pubic Areas	0	0	0	1
Intimidation of a Victim/Witness	3	0	3	1
Unlawful Use of Telephone	0	0	0	3
Sexual Assault	0	0	0	1
Resisting/Obstructing an Officer	8	1	9	16
Financial Transaction Card - Fraud - Fraudulent Use	0	0	0	4
Obtain Credit/Money/Goods/Service	1	0	1	3

**Reporting Period Enforcement Action: Total**  
**State/Criminal Arrests (continued)**

<b>VIOLATION</b>	<b>Misdemeanor</b>	<b>Felony</b>	<b>2008 Total</b>	<b>2007 Total</b>
Unauthorized use of individual's Personally Identifying Info (also PTC)	0	0	0	37
Carry False ID	0	0	0	1
Alter identifying Marks	1	0	1	1
Criminal Damage to Property	42	0	42	19
Battery to Police Officer	0	2	2	1
First Degree Reckless Endangerment	0	1	1	2
Manufacture/Deliver Schedule I & II Narcotics	0	2	2	0
Child Neglect	1	0	1	0
Dangerous Weapons Other Than Firearms on School Premises	1	0	1	0
Violation of Court Order	2	0	2	0
Violation of Domestic Abuse Injunction	1	0	1	0
Possession of Switchblade	2	0	2	0
Harassment	1	0	1	0
Carry Concealed Weapon	1	0	1	0
Receive Stolen Property	4	0	4	0
Possession of Schedule II Narcotics	0	2	0	0
Mistreatment of Animals	2	0	2	0
Sexual Assault of Mentally Ill Victim	0	1	1	0
Lewd & Lascivious Behavior	2	0	2	0
Negligent Handling of Burning Materials	1	0	1	0
Battery to Medical Care Provider	0	1	1	0
Possession of Heroin	1	0	1	0
Computer Message Threats	1	0	1	0
Expose Genitals to Child	2	0	2	0
Runaway	3	0	3	0
Possession of Firearm by Felon	0	1	1	
Warrant Arrests	20	2	22	29
Operating After Revocation	51	0	51	25
Operating MV While Intoxicated	15	1	16	12
Operating MV While Intoxicated - PAC	14	0	14	9
Fleeing an Officer	0	0	0	1
Operate w/o Valid Driver's License	5	0	5	2
Operate MV with Detectable Amt of Restricted Substance	0	0	0	0
Operate Motor Vehicle w/o Owner's Consent	0	2	2	3
<b>Totals</b>	<b>303</b>	<b>27</b>	<b>330</b>	<b>338</b>

# Reporting Period Enforcement Action: Totals

## Non-Criminal Arrests/Citations



# Reporting Period Enforcement Action: Total

## Non-Criminal Arrests/Citations

VIOLATION	2008 Total	2007 Total
Disorderly Conduct	42	41
Disorderly Conduct w/Motor Vehicle	15	6
Resisting/Obstructing an Officer	5	7
Underage Possession of Tobacco	20	7
Furnish Tobacco to Juvenile	2	3
Underage Possession/Consumption of Alcohol	60	25
Furnish Alcohol to Underage Person	11	3
Theft/Attempted Theft	14	14
Deface/Destroy Property	12	13
Cause Loud/Unnecessary Noise	16	7
Habitual Truancy	4	6
Speeding on Private Property	4	5
Failure to Stop at Stop Sign on Private Property	8	10
Possession of Marijuana	23	4
Possession of Drug Paraphernalia	11	2
Harassment	2	2
Truancy	45	33
Curfew Violation	20	7
Failure to Keep Cat/Dog Restrained	9	2
Harbor Animal/Public Nuisance	5	2
Impersonate Police Officer	0	1
Trespassing to Property	1	3
Trespassing to Railroad Property	0	2
Failure to Ride Bicycle on right side of Roadway	0	1
Fraud to Restaurant Keeper/Taxi	1	1
Littering	2	2
Maintain Recreational Fire w/o Permit	1	1
Possession/Use of Illegal Fireworks	1	3
Fail to Protect Passersby from Debris	0	1
Keep Vicious Animal	1	0
Unlawful Maintenance of Property	5	0
Sell Alcohol Without License	2	0
Fail to License Dog/Cat	1	0
Truancy - Parental Control	1	0
Unlawful Discharge of Bow & Arrow	1	0
Animal Bite - Order to Quarantine	2	0
Operate Bike/Blades w/o Light at Night	1	0
Speeding	54	84

**Reporting Period Enforcement Action: Total**  
**Non-Criminal Arrests/Citations (Continued)**

<b>VIOLATION</b>	<b>2008 Total</b>	<b>2007 Total</b>
Operating MV While Intoxicated	13	15
Operating MV While Intoxicated - PAC	10	13
Open Intoxicants in Motor Vehicle	6	1
Violation of License Restriction	3	6
Failure to Stop at Stop Sign	33	35
Operating After Suspension	92	52
Operating After Revocation	9	12
Non-Registration	54	36
Expired Registration	1	3
Seatbelt Violation	52	42
Violation of Safety Belt Requirement (child)	1	5
Hit & Run	4	4
Display Unauthorized Registration	2	5
Faililure to Display Plates	1	4
Failure to Obey Traffic Signal	3	4
Operate Motor Vehicle w/o Required Lights	1	1
Operate MV w/o Valid Driver's License	21	14
Operate Motorcycle w/o MC License	1	3
Operate MV After Registration Suspended	72	36
Defective Head/Taillamp	12	9
Defective Muffler	0	5
Driving too Fast for Conditions	7	3
Failure to Yield Right of Way	9	8
Automobile Following too Closely	1	2
Failure to Report Accident	3	4
Operating Left of the Center Line	2	5
Inattentive Driving	5	8
Unsafe Passing	0	2
Unsafe Lane Deviation	0	2
Endangering Safey by Reckless Driving	0	1
Unsafe Backing of Motor Vehicle	3	4
MV Windows Not Reasonably Clean	0	1
Operate Play Vehicle on Roadway	0	11
Passing in No Passing Zone	1	1
Failure to Ride Single File on Right Side of Roadway	0	1
Operate MV w/o Carrying Driver's License	1	0
Failure to Obey Officer Signal	0	2
Underage Transport of Alcohol	2	2

## Reporting Period Enforcement Action: Total

### Non-Criminal Arrests/Citations (Continued)

VIOLATION	2008 Total	2007 Total
Improper Turn	3	0
Permit Unauthorized Person to Drive	2	0
Unnecessary Blowing of Horn	1	0
Fail to Attach Sticker/Decal	1	0
Falsify Accident Report	1	0
Speed in School Zone	1	0
Illegal Muffler	1	0
Knowingly Operate MV w/o Valid Driver's License - Causing Injury	1	0
Stopping/Standing in Intersection	1	0
Truck Flashing Amber Lamp Restriction	1	0
<b>Totals</b>	<b>840</b>	<b>660</b>

## Patrol Operations: Extra Patrol Total Hours by District & Location

Location	Dist 1 Grid 1	Dist 1 Grid 2	Dist 1 Grid 3	Dist 1 Grid 4	Dist 1 Grid 10	Dist 1 Grid 11	Dist 1 Grid 12	Dist 2 Grid 5	Dist 2 Grid 16	Dist 3 Grid 6	Dist 4 Grid 7	Dist 4 Grid 15	Dist 5 Grid 8	Dist 6 Grid 9	Dist 6 Grid 13	Dist 6 Grid 14	2008	2007
325 McKinley St														48			48	43.67
1115 Thurke Av													56.33				56.33	43.51
923 Minnesota Av														11.93			11.93	1.67
Minnesota Av/Blackbird St											2						2	0
Swan Dr/Robin Dr		6.08															6.08	17.08
Harrison Ct/Park Ridge La Village Park														22			22	0
LeMieux Park											33.33			48.51			48.51	0
Gaslight Terrace		1.42															1.42	27.25
631 Wisconsin Av									11.42								11.42	0
1504 Minnesota Av											0.92						0.92	1.92
280 Garfield St														2			2	0
403 Wisconsin Av								4.42									4.42	0
Prospect Av/Winnebago St														17.08			17.08	0
305 McKinley St																	0	0.75
603 Wisconsin Av																	0	0.5
Michigan Av/McKinley St																	0	2.42
215 N. Pioneer Rd																	0	94.67
510 N Rolling Meadows Dr																	0	0.33
1506 Minnesota Ave																	0	0.92
1613 Fairlawn Av																	0	0.67
725 Michgian Av																	0	1.25
Cleveland St/Michigan Av																	0	8.17
Lakeshore Terrace																	0	16.41
Swan Dr/Robin Dr																	0	17.08
Green Meadows																	0	11
<b>TOTAL HOURS</b>	0	7.5	0	0	0	0	0	4.42	0	11.42	36.25	0	56.33	149.5	0	0	265.44	289.27

**NOTE: Addresses or intersections are used for activity tracking purposes and may not be reflective of the total area monitored.**

## Patrol Operations: Extra Patrol Detail Summary - **Contacts**

Addresses	Cause/Summary	Contacts
325 McKinley St	Standing Extra Patrol at Horace Mann High School	7
1115 Thurke Av	Standing Extra Patrol at Friendship Learning Center	6
923 Minnesota Av	Standing Extra Patrol at Early Learning Center	8
Minnesota Av/Blackbird St	Vehicles Speeding in Area	0
Swan Dr/Robin Dr	Traffic violations in mobile home community	1
Harrison Ct/Park Ridge La	Vehicles Speeding in Area	2
Village Park	Vandalism to Pplayground Equipment	0
LeMieux Park	Vandalism to Pplayground Equipment	0
Gaslight Terrace	Vehicles Speeding in Area	2
631 Wisconsin Av	Numerous Noise Complaints from Neighbors	0
1504 Minnesota Av	Quality of Life Issues, complaints from neighbors	0
280 Garfield St	Election Day	0
403 Wisconsin Av	Homeowner request in response to security concern	0
Prospect Av/Winnebago St	Vehicles Failing to make complete stop at stop sign to turn right onto Winnebago St	6

**NOTE: Addresses or intersections are used for activity tracking purposes and may not be reflective of the total area monitored.**

### Patrol Operations: Directed Area Patrol Totals Hours by District & Location

Location	Dist 1 Grid 1	Dist 1 Grid 2	Dist 1 Grid 3	Dist 1 Grid 4	Dist 1 Grid 10	Dist 1 Grid 11	Dist 1 Grid 12	Dist 2 Grid 5	Dist 2 Grid 16	Dist 3 Grid 6	Dist 4 Grid 7	Dist 4 Grid 15	Dist 5 Grid 8	Dist 6 Grid 9	Dist 6 Grid 13	Dist 6 Grid 14	2008	2007
400 Prospect Av																	0	35.5
1504 Minnesota Av											18						18	0
710 Lakeshore Dr																	0	66.26
Adams Av/McKinley St																	0	67.16
555 N Pioneer Rd																	0	0.75
565 N Pioneer Rd																	0	14
Gaslight Terrace																	0	34.67
<b>Totals</b>	0	0	0	0	0	0	0	0	0	0	18	0	0	0	0	0	18	218.34

**NOTE: Addresses or intersections are used for activity tracking purposes and may not be reflective of the total area monitored.**

### Patrol Operations: Directed Area Patrol Detail Summary - CONTACTS

Addresses	Cause/Summary	Contacts
1504 Minnesota Av	Juvenile Problems, Noise, Juvenile Alcohol, Traffic and other quality of life concerns	1

## Patrol Operations: Traffic Accidents Community Total

	Reportable	Non-Reportable	2008	2007	% Change	Hit & Run	Injuries	Fatalities	2008	2007	% Change
District 1/Grid 1	1	0	1	0	100.0%	0	0	0	0	0	0.0%
District 1/Grid 2	1	3	4	5	-20.0%	0	0	0	0	1	-100.0%
District 1/Grid 3	0	1	1	1	0.0%	0	0	0	0	0	0.0%
District 1/Grid 4	1	1	2	2	0.0%	0	0	0	0	0	0.0%
District 1/Grid 10	0	0	0	0	0.0%	0	0	0	0	0	0.0%
District 1/Grid 11	14	3	17	26	-34.6%	0	1	1	2	6	-66.7%
District 1/Grid 12	0	0	0	0	0.0%	0	0	0	0	0	0.0%
District 2/Grid 5	17	8	25	26	-3.8%	1	1	0	2	4	-50.0%
District 2/Grid 16	0	0	0	2	-200.0%	0	0	0	0	1	-100.0%
District 3/Grid 6	6	10	16	11	45.5%	3	0	0	3	4	-25.0%
District 4/Grid 7	5	3	8	3	166.7%	4	0	0	4	0	400.0%
District 4/Grid 15	0	0	0	0	0.0%	0	0	0	0	0	0.0%
District 5/Grid 8	7	4	11	9	22.2%	0	0	0	0	2	-200.0%
District 6/Grid 9	7	10	17	16	6.3%	4	1	0	5	1	400.0%
District 6/Grid 13	0	0	0	0	0.0%	0	0	0	0	0	0.0%
District 6/Grid 14	0	0	0	0	0.0%	0	0	0	0	0	0.0%
Other	0	0	0	0	0.0%	0	0	0	0	0	0.0%
<b>TOTALS</b>	59	43	102	101	1.0%	12	3	1	16	19	-15.8%

**Patrol Operations: Parking Enforcement, Abandoned Vehicles, House Checks, Business Checks,  
Business Checks, SIFA/1037 (Self Initiated Field Activity/Suspicious) & Open Doors**

Parking Enforcement				House Checks			Abandoned Vehicles		
DISTRICTS	2008	2007	% Change	2008	2007	% Change	2008	2007	% Change
District 1/Grid 1	0	1	-100%	139	170	-18%	2	0	200%
District 1/Grid 2	3	7	-57%	192	304	-37%	5	11	-55%
District 1/Grid 3	0	0	0%	0	2	-200%	0	4	-400%
District 1/Grid 4	8	2	300%	27	15	80%	2	1	100%
District 1/Grid 10	0	0	0%	0	0	0%	0	0	0%
District 1/Grid 11	10	12	-17%	0	1	-100%	6	7	-14%
District 1/Grid 12	0	0	0%	0	0	0%	0	0	0%
District 2/Grid 5	29	21	38%	68	16	325%	5	5	0%
District2/Grid 16	0	0	0%	0	0	0%	0	0	0%
District 3/Grid 6	45	43	5%	21	0	2100%	7	7	0%
District 4/Grid 7	55	40	38%	186	148	26%	9	15	-40%
District 4/Grid 15	0	0	0%	0	0	0%	0	0	0%
District 5/Grid 8	104	30	247%	91	120	-24%	6	4	50%
District 6/Grid 9	86	45	91%	73	26	181%	13	2	550%
District 6/Grid 13	0	7	-700%	0	2	-200%	1	1	0%
District 6/Grid 14	0	0	0%	0	0	0%	0	0	0%
Other	0	0	0%	0	0	0%	0	0	0%
<b>TOTALS</b>	<b>340</b>	<b>208</b>	<b>63%</b>	<b>797</b>	<b>804</b>	<b>-1%</b>	<b>56</b>	<b>57</b>	<b>-2%</b>

Business Checks				SIFA/1037			Open Doors		
	2008	2007	% Change	2008	2007	% Change	2008	2007	% Change
<b>Totals</b>	<b>3697</b>	<b>5887</b>	<b>-37%</b>	<b>140</b>	<b>74</b>	<b>89%</b>	<b>41</b>	<b>82</b>	<b>-50%</b>

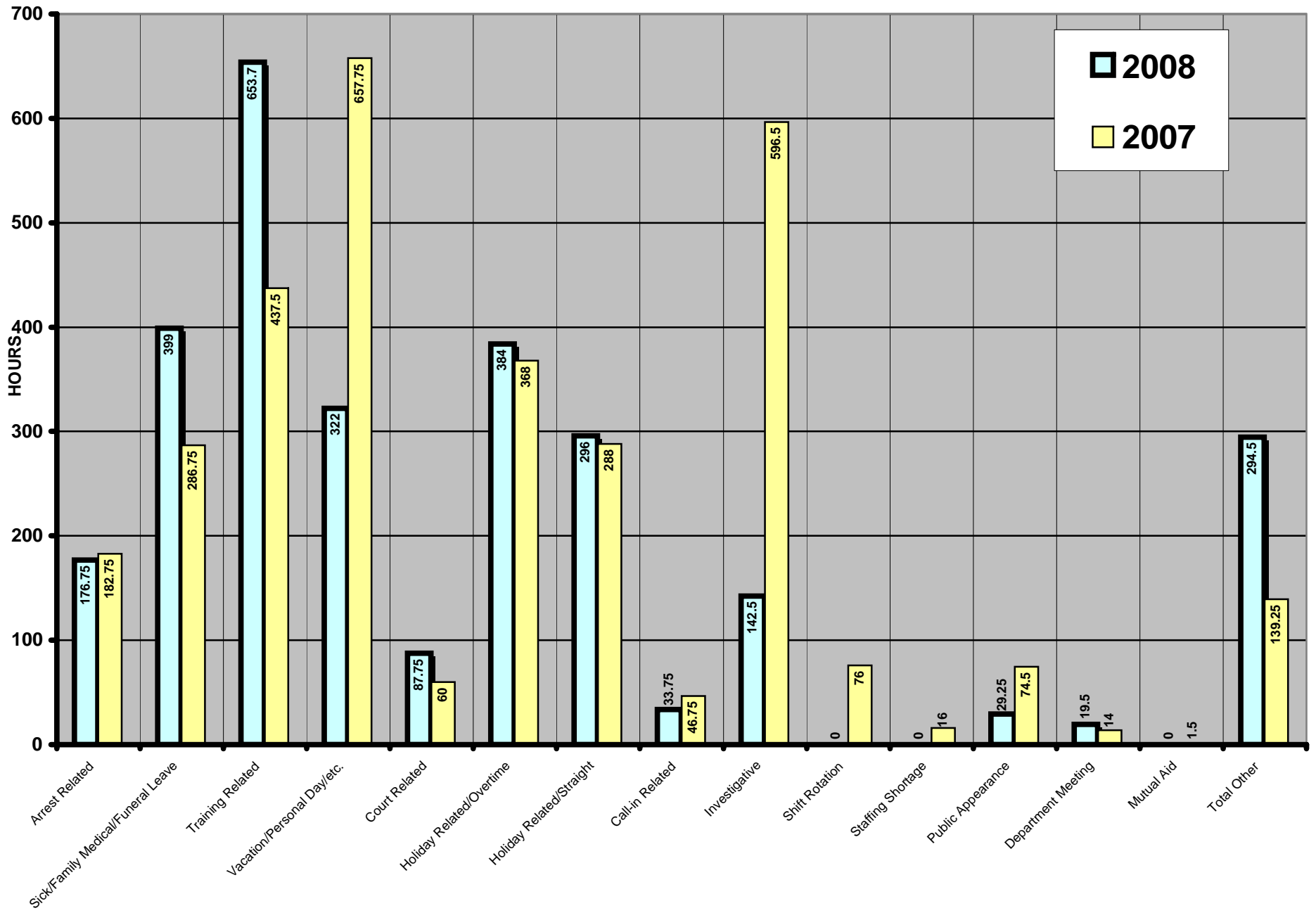
## Financial Information

Municipal Court Fines/Forfeitures	2008	2007
January	\$ 2,335.87	\$ 1,828.80
February	\$ 3,238.00	\$ 2,202.50
March	\$ 3,577.25	\$ 16,440.01
April	\$ 2,222.30	\$ 1,986.80
May	\$ 1,965.66	\$ 4,390.88
June	\$ 2,102.50	\$ 2,308.65
July	\$ 1,356.00	\$ 3,110.01
August	\$ 2,310.00	\$ 3,764.40
September	\$ 3,435.53	\$ 2,289.50
October	\$ 4,179.84	\$ 2,690.99
November	\$ 4,053.57	\$ 1,850.00
December	\$ 2,921.60	\$ 1,323.00
<b>Year to Date Amount</b>	<b>\$ 33,698.12</b>	<b>\$ 44,185.54</b>

Fond du Lac Clerk of Courts Fines/Forfeitures	2008	2007
January	\$ -	\$ 137.81
February	\$ -	\$ -
March	\$ -	\$ -
April	\$ -	\$ 63.64
May	\$ 112.50	\$ 268.27
June	\$ -	\$ -
July	\$ -	\$ -
August	\$ -	\$ 138.86
September	\$ -	\$ -
October	\$ -	\$ -
November	\$ 37.50	\$ -
December	\$ -	\$ -
<b>Year to Date Amount</b>	<b>\$150.00</b>	<b>\$ 608.58</b>

Other Revenue	2008	2007
Parking Tickets	\$ 6,340.00	\$ 3,600.00
Bike Licenses	\$ 147.00	\$ 160.00
Operators Licenses	\$ 825.00	\$ 1,320.00
Vehicle Lockout Fees	\$ 960.00	\$ 930.00
Copies	\$ 208.17	\$ 135.69
Miscellaneous	\$ 267.75	\$ 270.00
<b>Totals</b>	<b>\$ 8,747.92</b>	<b>\$ 6,415.69</b>

# OVERTIME ANALYSIS



## OVERTIME COMPARISON

	2008	2007
Arrest Related	176.75	182.75
Sick/Family Medical/Funeral Leave	399	286.75
Training Related	653.7	437.5
Vacation/Personal Day/etc.	322	657.75
Court Related	87.75	60
Holiday Related/Overtime	384	368
Holiday Related/Straight	296	288
Call-in Related	33.75	46.75
Investigative	142.5	596.5
Shift Rotation	0	76
Staffing Shortage	0	16
Public Appearance	29.25	74.5
Department Meeting	19.5	14
Mutual Aid	0	1.5
Total Other	294.5	139.25
<b>Total Overtime Hours</b>	<b>2838.7</b>	<b>3245.25</b>

Reason By Percent	2008	2007
Arrest Related	6.23%	5.63%
Sick/Family Medical Leave/Funeral Leave	14.06%	8.84%
Training Related	23.03%	13.48%
Vacation/Personal Day/etc.	11.34%	20.27%
Court Related	3.09%	1.85%
Holiday Related/Overtime	13.53%	11.34%
Holiday Related/Straight	10.43%	8.87%
Call-in Related	1.19%	1.44%
Investigative	5.02%	18.38%
Shift Rotation	0.00%	2.34%
Staffing Shortage	0.00%	0.49%
Public Appearance	1.03%	2.30%
Department Meeting	0.69%	0.43%
Mutual Aid	0.00%	0.05%
Total Other	10.37%	4.29%
<b>Total Overtime Hours</b>	<b>100.00%</b>	<b>100.00%</b>