

Annual Report



2007

TABLE OF CONTENTS

Reporting Period Crime/Incident Reports: Total by Category & District	Pg 3
Reporting Period Crime/Incident Reports: Total by Category	Pg 4
Reporting Period Property Stolen & Recovered Report: Totals	Pg 5
Reporting Period Officers Injured, Killed or Assaulted: Totals	Pg 6
Reporting Period Enforcement Action: State/Criminal Arrest Totals	Pg 7-9
Reporting Period Enforcement Action: Traffic & Non-Traffic Totals	Pg 10
Reporting Period Enforcement Action: Ordinance Citation Totals	Pg 11-13
Patrol Operations: Extra Patrol Total Hours by District & Location	Pg 14-15
Patrol Operations: Extra Patrol Detail Summary	Pg 16
Patrol Operations: Directed Area Patrol Totals by District & Location	Pg 17
Patrol Operations: Directed Area Patrol Detail Summary	Pg 18
Patrol Operations Report: Traffic Accidents Community Total by District	Pg 19
Patrol Operations: Parking Enforcement, Abandoned Vehicles, House Checks, Business Checks, SIFA/1037 & Open Doors	Pg 20
Financial Information	Pg 21
Overtime Analysis	Pg 22
Overtime 2 year Comparison	Pg 23

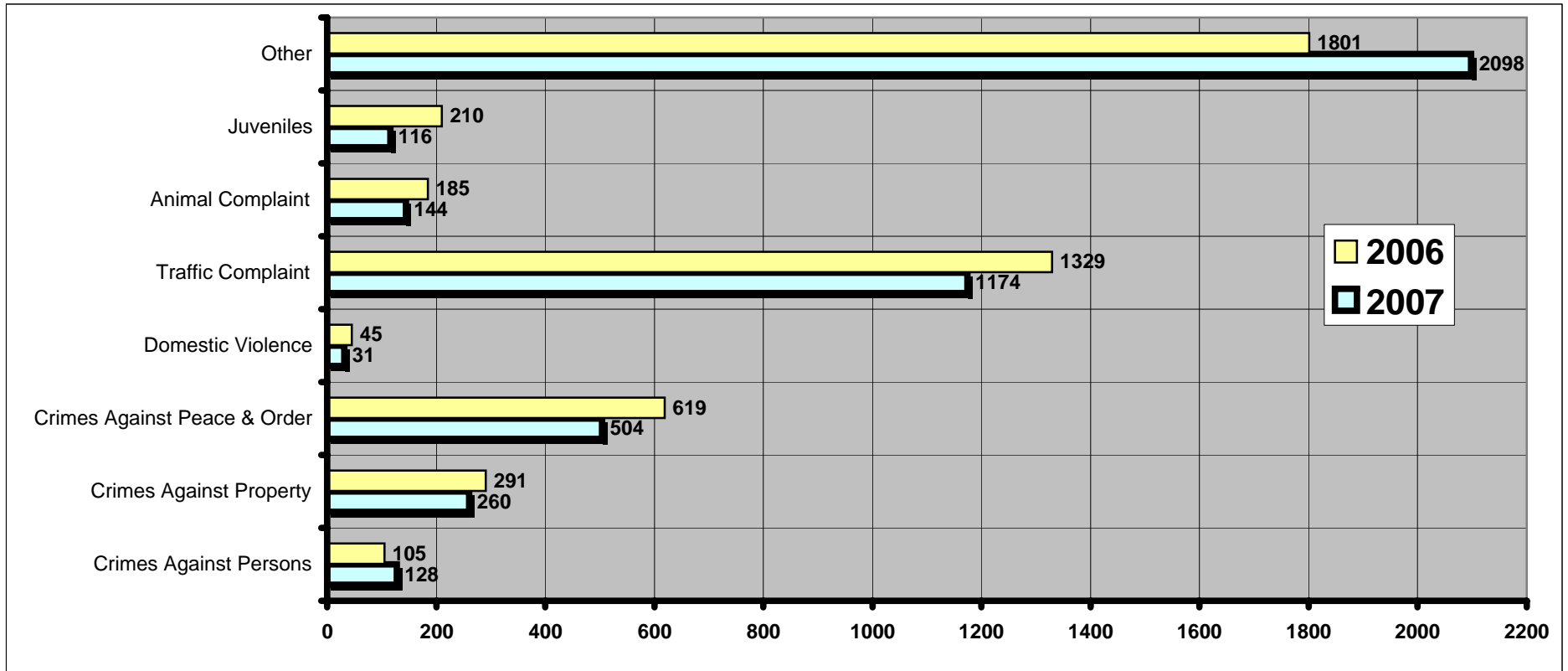
****KEY: RP = Reporting Period YTD = Year to Date
 LYRP = Last Year Reporting Period LYTD = Last Year to Date
 LRP = Last Reporting Period

IMPORTANT NOTE: The numbers reflected in this report are based specifically on total actuals and are NOT reflective of per capita statistics.

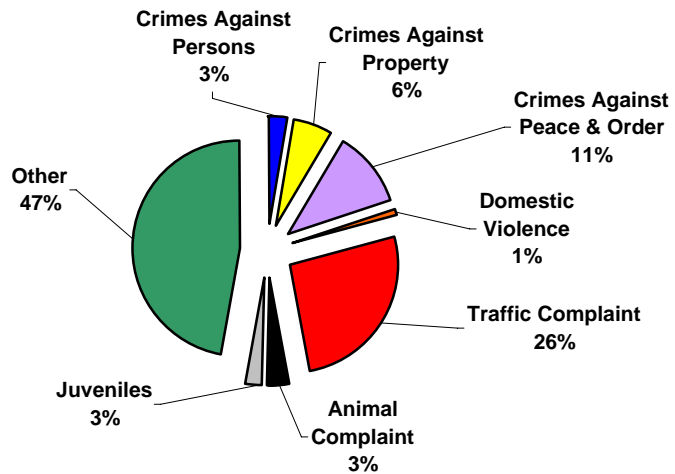
Reporting Period Crime/Incident Reports: Total by Category And District

	Crimes Against Persons	Crimes Against Property	Crimes Against Peace & Order	Domestic Violence	Traffic Complaint	Animal Complaint	Juveniles	Other	2007	2006	% Change
District 1/Grid 1	4	11	18	1	17	4	1	196	252	229	10.0%
District 1/Grid 2	10	26	51	3	93	13	15	406	617	481	28.3%
District 1/Grid 3	1	3	6	0	3	5	1	24	43	40	7.5%
District 1/Grid 4	7	8	20	2	56	7	6	77	183	217	-15.7%
District 1/Grid 10	0	0	0	0	0	0	0	0	0	0	0.0%
District 1/Grid 11	5	43	69	0	211	2	4	148	482	507	-4.9%
District 1/Grid 12	0	0	3	0	15	0	1	9	28	37	-24.3%
District 2/Grid 5	12	39	60	5	317	11	8	172	624	619	0.8%
District 2/Grid 16	1	2	6	2	19	0	0	11	41	18	127.8%
District 3/Grid 6	22	33	96	5	109	24	9	197	495	642	-22.9%
District 4/Grid 7	11	37	47	2	63	38	11	285	494	536	-7.8%
District 4/Grid 15	0	0	0	0	0	0	0	0	0	0	0.0%
District 5/Grid 8	22	25	44	5	95	30	11	219	451	435	3.7%
District 6/Grid 9	33	32	81	6	167	10	49	249	627	703	-10.8%
District 6/Grid 13	0	0	0	0	4	0	0	3	7	2	250.0%
District 6/Grid 14	0	0	1	0	0	0	0	3	4	2	100.0%
Other	0	1	2	0	5	0	0	99	107	117	-8.5%
TOTALS	128	260	504	31	1174	144	116	2098	4455	4585	-2.8%

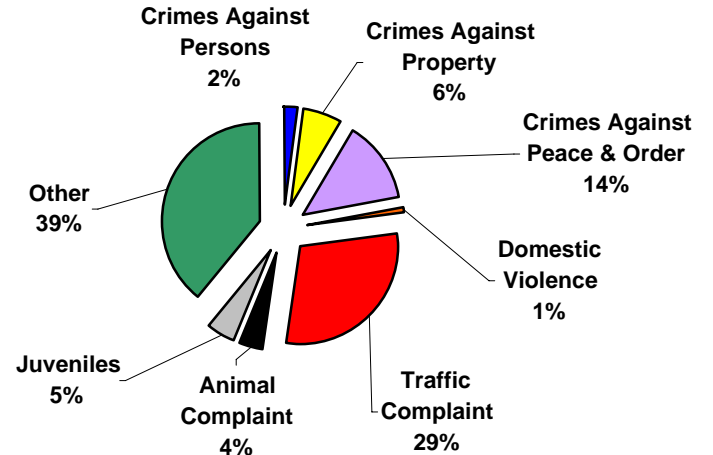
Reporting Period Crime/Incident Reports: Total by Category



2007



2006



Reporting Period Property Stolen & Recovered Report: Totals

Value of Property Stolen

	2007	2006
District 1/Grid 1	\$ -	\$ 6,238.80
District 1/Grid 2	\$ 1,310.00	\$ 3,406.00
District 1/Grid 3	\$ 8.00	\$ 1,750.00
District 1/Grid 4	\$ 3,813.00	\$ 3,517.00
District 1/Grid 10	\$ -	\$ -
District 1/Grid 11	\$ 9,266.00	\$ 12,683.36
District 1/Grid 12	\$ -	\$ -
District 2/Grid 5	\$ 6,507.00	\$ 580.00
District 2/Grid 16	\$ 1,000.00	\$ -
District 3/Grid 6	\$ 12,180.00	\$ 2,039.54
District 4/Grid 7	\$ 16,023.00	\$ 4,885.00
District 4/Grid 15	\$ -	\$ 20.00
District 5/Grid 8	\$ 2,681.00	\$ 12,370.00
District 6/Grid 9	\$ 11,818.00	\$ 2,960.95
District 6/Grid 13	\$ 19.00	\$ -
District 6/Grid 14	\$ -	\$ -
TOTALS	\$ 64,625.00	\$ 50,450.65

Value of Property Recovered

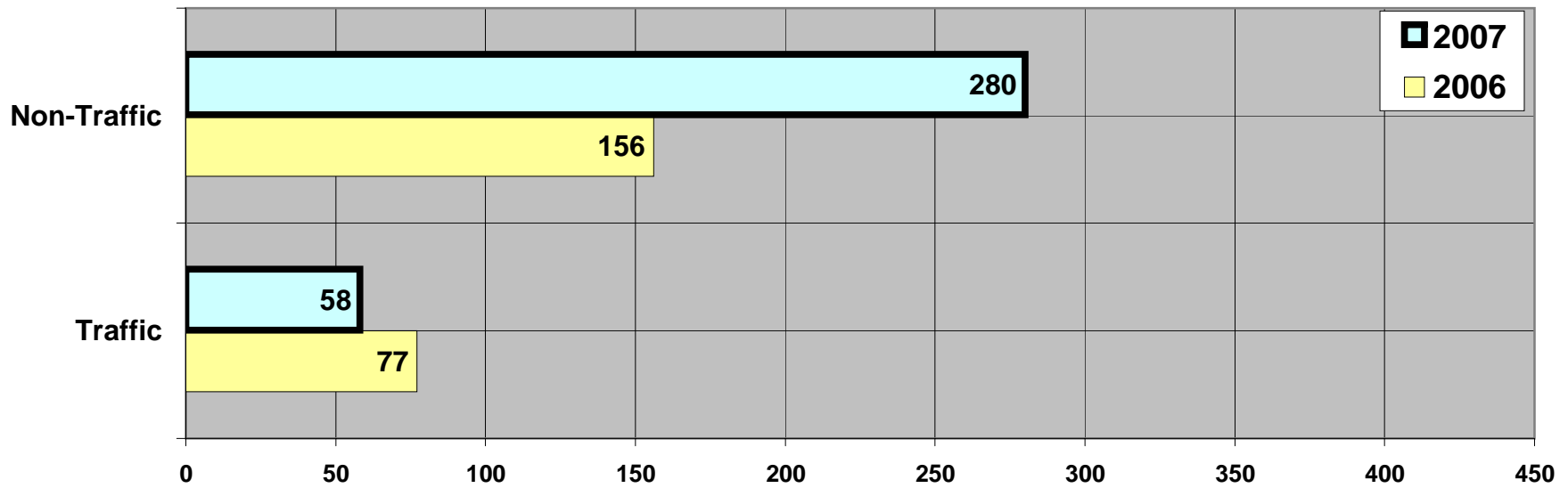
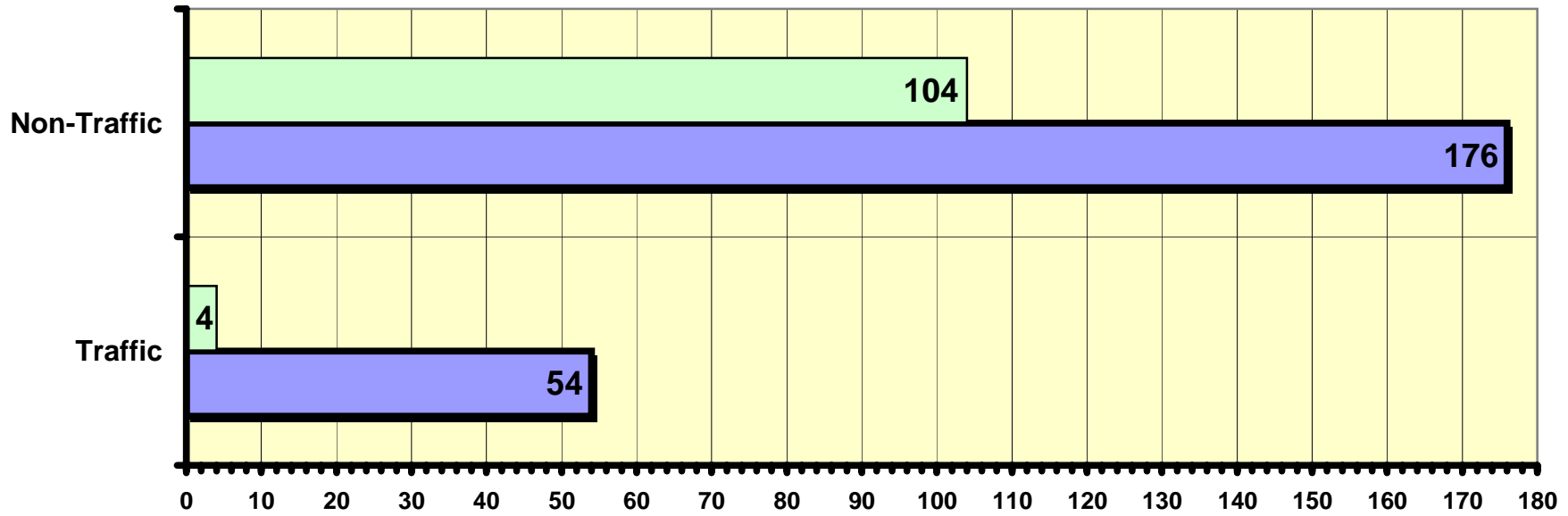
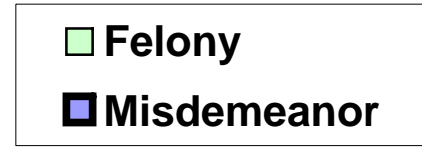
	2007	2006
District 1/Grid 1	\$ -	\$ 5,000.00
District 1/Grid 2	\$ 500.00	\$ -
District 1/Grid 3	\$ -	\$ -
District 1/Grid 4	\$ -	\$ 4.00
District 1/Grid 10	\$ -	\$ -
District 1/Grid 11	\$ 1.00	\$ 1,395.66
District 1/Grid 12	\$ -	\$ -
District 2/Grid 5	\$ 132.00	\$ 382.00
District 2/Grid 16	\$ -	\$ -
District 3/Grid 6	\$ 145.00	\$ 1,544.00
District 4/Grid 7	\$ 516.00	\$ 1,581.00
District 4/Grid 15	\$ -	\$ -
District 5/Grid 8	\$ 3,801.00	\$ 5.00
District 6/Grid 9	\$ 362.00	\$ 2,804.95
District 6/Grid 13	\$ -	\$ -
District 6/Grid 14	\$ -	\$ -
TOTALS	\$ 5,457.00	\$ 12,716.61

Reporting Period Officers Injured, Killed or Assaulted: Totals

	2007	2006	2005	2004
Use of Force Incidents	15	10	5	12
Officers Involved	25	14	13	21
Officers Injured	0	1	0	0
Officers Killed	0	0	0	0
Officers Assaulted	1	0	0	0
Subjects Involved	15	9	5	6
Subjects Injured	0	1	0	0

Reporting Period Enforcement Action: Total

State/Criminal Arrests



Reporting Period Enforcement Action: Total

State/Criminal Arrests

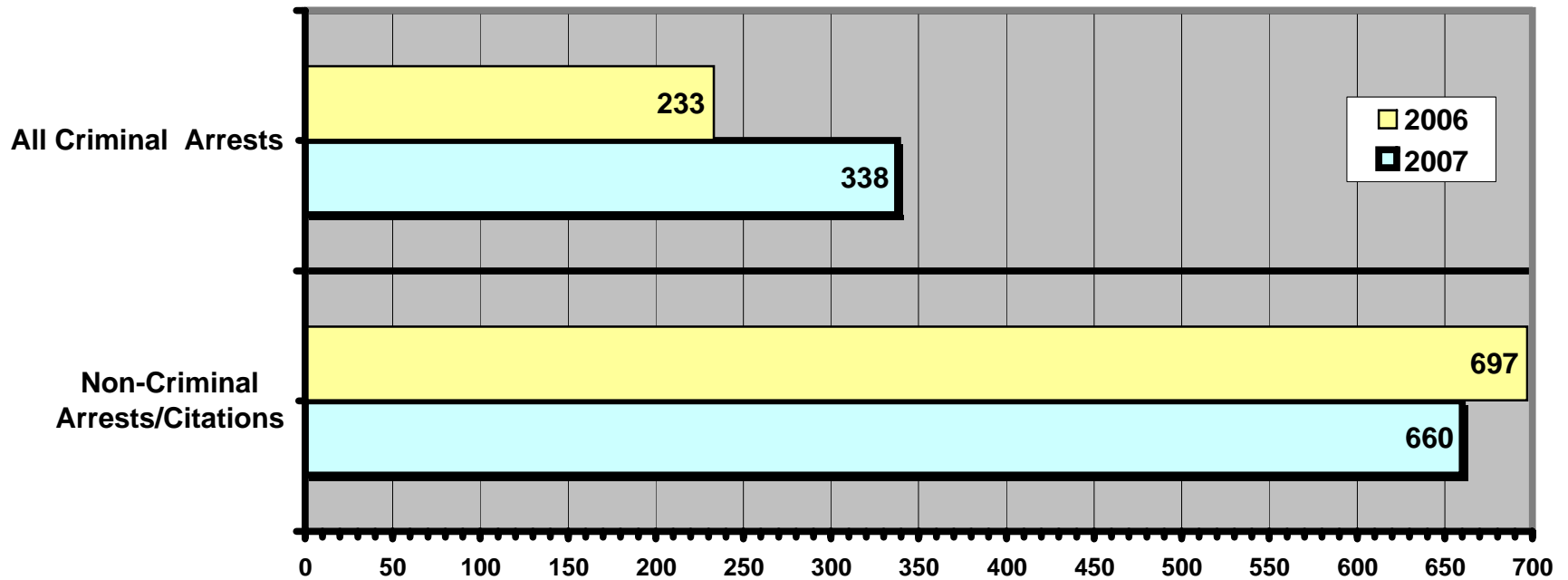
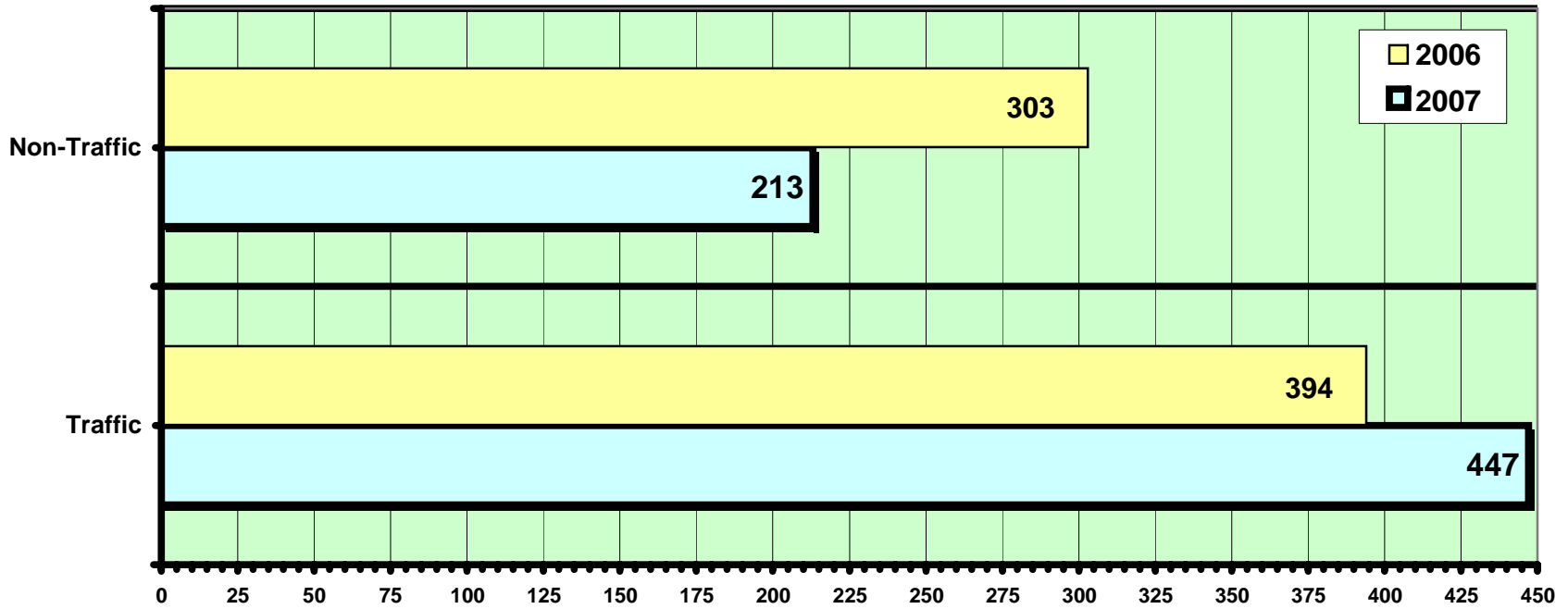
VIOLATION	Misdemeanor	Felony	2007 Total	2006 Total
Disorderly Conduct	49	0	49	35
Aiding a Felon	0	0	0	2
Escape	0	1	1	0
Possession of a Controlled Substance	0	0	0	3
Possession of MDMA Schedule I & II Substance	0	0	0	1
Possession of Marijuana	1	2	3	7
Possession of Drug Paraphernalia	1	1	2	8
Sexual Assault of a Child	0	9	9	2
Sexual Assault of a Student by School Staff	0	10	10	0
Expose Genitals to Child	0	0	0	3
Expose Child to Harmful Materials	0	3	3	1
Child Abuse	0	4	4	0
Child Enticement	0	4	4	2
Sexual Intercourse with Child age 16 or older	1	2	3	0
Intentionally Contribute to the Delinquency of a Child	4	0	4	0
Repeated Sexual Assault of a Child	0	4	4	0
Failure to Act - Sexual Assault	0	1	1	0
Interference with Custody	0	1	1	1
Aggravated Battery	2	0	2	1
Battery	15	0	15	0
Bailjumping	10	0	10	4
Falsely Act as Public Official	0	0	0	1
Violate Harrassment Injunction	1	0	1	0
Theft/Theft Party to the Crime	22	3	25	6
Underage Possession/Consumption of Alcohol	1	0	1	3
Burglary	0	2	2	13
Furnish Alcohol to Underage Person	4	0	4	0
False Imprisonment	1	2	3	2
Forgery - Uttering	0	3	3	0
Criminal Trespass to Property	2	0	2	0
Criminal Trespass to Dwelling	1	0	1	3
Exposing Genitals or Pubic Areas	1	0	1	0
Use/Sale of Illegal Fireworks	0	0	0	1

Reporting Period Enforcement Action: Total
State/Criminal Arrests (continued)

VIOLATION	Misdemeanor	Felony	2007 Total	2006 Total
Election Fraud - Attempted	0	0	0	1
Intimidation of a Victim	1	0	1	2
Unlawful Use of Telephone	3	0	3	2
Sexual Assault	1	0	1	0
Resisting/Obstructing an Officer	15	1	16	4
Harrassment	0	0	0	1
Financial Transaction Card - Fraud - Fraudulent Use	1	3	4	21
Obtain Credit/Money/Goods/Service	1	2	3	0
Unauthorized use of individual's Personally Identifying Info (also PTC)	0	37	37	0
Carry False ID	1	0	1	0
Alter identifying Marks	0	1	1	0
Criminal Damage to Property	19	0	19	7
Battery to Police Officer	0	1	1	0
Endanger Safety by Use of a Dangerous Weapon	0	0	0	5
False Complaint of Police Misconduct	0	0	0	1
First Degree Reckless Endangerment	0	2	0	0
Misappropriation of Personal Information	0	0	0	1
Warrant Arrests	25	4	29	12
Operating After Revocation	25	0	25	36
Operating MV While Intoxicated	11	1	12	19
Operating MV While Intoxicated - PAC	8	1	9	12
	0	0	0	0
Fleeing an Officer	0	1	1	2
Operate w/o Valid Driver's License	2	0	2	2
	0	0	0	0
	0	0	0	0
Operate MV with Detectable Amt of Restricted Substance	0	0	0	1
Operate Motor Vehicle w/o Owner's Consent	1	2	3	3
Reckless Driving - Causing Bodily Harm	0	0	0	1
Reckless Endangering Safety - 2nd Degree	0	0	0	1
Totals	230	108	338	233

Reporting Period Enforcement Action: Totals

Non-Criminal Arrests/Citations



Reporting Period Enforcement Action: Total
Non-Criminal Arrests/Citations

VIOLATION	2007 Total	2006 Total
Disorderly Conduct	41	73
Disorderly Conduct w/Motor Vehicle	6	9
Resisting/Obstructing an Officer	7	4
Lewd & Lascivious Behavior	0	1
Underage Possession of Tobacco	7	25
Furnish Tobacco to Juvenile	3	1
Underage Possession/Consumption of Alcohol	25	31
Furnish Alcohol to Underage Person	3	4
Sale of Alcohol w/o Licensed Person on Site	0	1
Class A Premises Open w/o License, Agent or Operator	0	2
Remain in Park After Hours	0	1
Theft	14	19
Deface/Destroy Property	13	11
Cause Loud/Unnecessary Noise	7	7
Property Maintenance	0	5
Habitual Truancy	6	0
Speeding on Private Property	5	12
Failure to Stop at Stop Sign on Private Property	10	3
Owner Allow Rocks/Waste to Accumulate	0	1
Possession of Marijuana	4	10
Possession of Drug Paraphernalia	2	5
Harrassment	2	1
Truancy	33	32
Parental Responsibility for Juvenile Misconduct	0	1
Curfew Violation	7	12
Refuse Container Violation	0	1
Failure to Keep Cat/Dog Restrained	2	6
Harbor Animal/Public Nuisance	2	2
Impersonate Police Officer	1	0
Failure to License Dog	0	3
Animal Bite	0	1
Trespassing to Property	3	10
Trespassing to Railroad Property	2	1
Operate a Bike w/o a Light	0	2
Failure to Ride Bicycle on right side of Roadway	1	1
Failure to Stop at Stop Sign on Bicycle	0	3
Fraud to Restaurant Keeper/taxi	1	1
Littering	2	0

Reporting Period Enforcement Action: Total
Non-Criminal Arrests/Citations (Continued)

VIOLATION	2007 Total	2006 Total
Underaged Transport of Alcohol	2	0
Maintain Recreational Fire w/o Permit	1	0
Possession/Use of Illegal Fireworks	3	0
Fail to Protect Passersby from Debris	1	0
Warrant Arrests	0	1
Speeding	84	37
Operating MV While Intoxicated	15	18
Operating MV While Intoxicated - PAC	13	11
Operate MV w/detectable amount of restricted substance	0	1
Open Intoxicants in Motor Vehicle	1	7
Violation of License Restriction	6	1
Failure to Stop at Stop Sign	35	15
Operating After Suspension	52	62
Operating After Revocation	12	6
Non-Registration	36	23
Expired Registration	3	1
Improper Display of Registration	0	2
Seatbelt Violation	42	69
Violation of Safety Belt Requirement (child)	5	3
Hit & Run	4	3
Display Unauthorized Registration	5	3
Driving on Sidewalk	0	1
Failure to Apply for Title Transfer	0	2
Faililure to Display Plates	4	10
Failure to Obey Road Closed Sign	0	1
Failure to Obey Traffic Signal	2	6
Faililure to Obey Red Traffic Control Signal	2	2
Operate Motor Vehicle w/o Required Lights	1	1
Operate MV w/o Valid Driver's License	14	18
Operate Motorcycle w/o MC License	3	0
Expired Driver's License	0	2
Graduated Driver's License Violation	0	1
Operate MV After Registration Suspended	36	47
Failure to Notify DMV of Address Change	0	3
Defective Taillight at Night	1	1
Defective Headlights	8	0
Improper Colored Lights	0	1
Defective Muffler	5	3

Reporting Period Enforcement Action: Total

Non-Criminal Arrests/Citations (Continued)

VIOLATION	2007 Total	2006 Total
Driving too Fast for Conditions	3	0
Unsafe/Improper Turn	0	2
Failure to Yield Right of Way	8	9
Automobile Following too Closely	2	1
Failure to Report Accident	4	2
Operating Left of the Center Line	5	6
Inattentive Driving	8	6
Unsafe Passing	2	2
Unsafe Lane Deviation	2	2
Endangering Safety by Reckless Driving	1	1
Unsafe Backing of Motor Vehicle	4	2
MV Windows Not Reasonably Clean	1	0
Operate Play Vehicle on Roadway	11	0
Passing in No Passing Zone	1	0
Failure to Ride Single File on Right Side of Roadway	1	0
Failure to Obey Officer Signal	2	0
Totals	660	697

Patrol Operations: Extra Patrol Total Hours by District & Location

Location	Dist 1 Grid 1	Dist 1 Grid 2	Dist 1 Grid 3	Dist 1 Grid 4	Dist 1 Grid 10	Dist 1 Grid 11	Dist 1 Grid 12	Dist 2 Grid 5	Dist 2 Grid 16	Dist 3 Grid 6	Dist 4 Grid 7	Dist 4 Grid 15	Dist 5 Grid 8	Dist 6 Grid 9	Dist 6 Grid 13	Dist 6 Grid 14	2007	2006
215 N. Pioneer Rd						94.67											94.67	1
510 N Rolling Meadows Dr							0.33										0.33	0
137 North St																	0	6.83
510 N. Pioneer Rd																	0	10.08
555 N. Pioneer Rd																	0	1.83
565 N. Pioneer Rd																	0	8.67
305 McKinley St														0.75			0.75	1.5
325 McKinley St														43.67			43.67	37.75
70 Center St																	0	1.42
328 Wisconsin Av																	0	1.42
531 Wisconsin Av																	0	4.42
603 Wisconsin Av										0.5							0.5	14.92
400 Prospect Av																	0	4.92
923 Minnesota Av														1.67			1.67	8.75
729 Minnesota Av																	0	3.25
Michigan Av/McKinley St											2.42						2.42	0
1105 Minnesota Av																	0	2.33
1504 Minnesota Av											1.92						1.92	0
433 Michigan Av																	0	0.08
728 Michigan Av																	0	8.17
1113 Michigan Av																	0	3.25
1808 Thurke Av																	0	3.25
1115 Thurke Av													43.51				43.51	56.17
1 Lakeshore Dr																	0	4.58
1506 Minnesota Ave											0.92						0.92	0
1613 Fairlawn Av													0.67				0.67	0
725 Michgian Av										1.25							1.25	0
151 Harrison St																	0	1.58
Cleveland St/Michigan Av										8.17							8.17	0
Lakeshore Terrace	16.41																16.41	0
Gaslight Terrace		27.25															27.25	0.33
Green Meadows			11														11	0
105 Twin Lakes Dr																	0	1.17
109 Twin Lakes Dr																	0	6.92
Swan Dr/Robin Dr		17.08															17.08	0
185 Twin Lakes Dr																	0	3.83
Subtotal (carryover to Pg 17)	16.41	44.33	11	0	0	94.67	0.33	0	0	9.92	5.26	0	44.18	46.09	0	0	272.19	198.42

NOTE: Addresses or intersections are used for activity tracking purposes and may not be reflective of the total area monitored.

Patrol Operations: Extra Patrol Total Hours by District & Location

Location	Dist 1 Grid 1	Dist 1 Grid 2	Dist 1 Grid 3	Dist 1 Grid 4	Dist 1 Grid 10	Dist 1 Grid 11	Dist 1 Grid 12	Dist 2 Grid 5	Dist 2 Grid 16	Dist 3 Grid 6	Dist 4 Grid 7	Dist 4 Grid 15	Dist 5 Grid 8	Dist 6 Grid 9	Dist 6 Grid 13	Dist 6 Grid 14	2007	2006
Page 16 subtotal																	272.19	198.42
604 Florida Av																	0	10.59
18 Swan Dr																	0	3.67
Prospect Av/Winnebago st																	0	11.16
Lakeshore Dr/State St																	0	10
Oriole Pkw/Swan Dr																	0	1.25
207 Blackbird St																	0	7.08
TOTAL HOURS	0	0	0	0	0	0	0	0	0	0	0	0	0	0	0	0	272.19	242.17

NOTE: Addresses or intersections are used for activity tracking purposes and may not be reflective of the total area monitored.

Patrol Operations: Directed Area Patrol Totals Hours by District & Location

Location	Dist 1 Grid 1	Dist 1 Grid 2	Dist 1 Grid 3	Dist 1 Grid 4	Dist 1 Grid 10	Dist 1 Grid 11	Dist 1 Grid 12	Dist 2 Grid 5	Dist 2 Grid 16	Dist 3 Grid 6	Dist 4 Grid 7	Dist 4 Grid 15	Dist 5 Grid 8	Dist 6 Grid 9	Dist 6 Grid 13	Dist 6 Grid 14	2007	2006
400 Prospect Av								35.5									35.5	0
Harrison St/Washington Av																	0	6.66
710 Lakeshore Dr									66.26								66.26	0
108 McKinley St																	0	32.17
Adams Av/McKinley St													67.16				67.16	35.92
Lincoln Av/ Wisconsin Av																	0	2.67
555 N Pioneer Rd						0.75											0.75	0
565 N Pioneer Rd						14											14	0
Chapman Av/Broadway St																	0	1.42
Lakeshore Dr/Indiana Av																	0	39.58
Minnesota Av/Anne St																	0	44.39
Minnesota Av/McKinley St																	0	38.91
Minnesota Av/Cleveland St																	0	23
1000 (now 3) Gaslight Terrace																	0	4.83
N. Pioneer Rd/Mockingbird La																	0	128.16
Thurke Av/Broadway St																	0	2.25
Lakeshore Terrace																	0	0.5
Green Meadows																	0	30.67
Gaslight Terrace		34.67															34.67	0
Swan Dr/Oriole Pkw																	0	4.08
Swan Dr/Cardinal Ct																	0	92.5
Totals	0	34.67	0	0	0	14.75	0	35.5	66.26	0	0	0	67.16	0	0	0	218.34	487.71

NOTE: Addresses or intersections are used for activity tracking purposes and may not be reflective of the total area monitored.

Patrol Operations: Directed Area Patrol Detail Summary - CONTACTS

Addresses	Cause/Summary	Contacts
565 N Pioneer Rd	Armed Robberies	0
710 Lakeshore Dr	Traffic Complaint	57
Gaslight Terrace	Vandalism	3
400 Prospect Av	Armed Robberies	1
Adams Av/McKinley St	Standing DAP @ schools - suspicious person approached child	0
555 N Pioneer Rd	Business Check	0

Patrol Operations: Traffic Accidents Community Total

	Reportable	Non-Reportable	2007	2006	% Change	Hit & Run	Injuries	Fatalities	2007	2006	% Change
District 1/Grid 1	0	0	0	0	0.0%	0	0	0	0	0	0.0%
District 1/Grid 2	4	1	5	4	25.0%	1	0	0	1	0	100.0%
District 1/Grid 3	0	1	1	1	0.0%	0	0	0	0	1	-100.0%
District 1/Grid 4	1	1	2	1	100.0%	0	0	0	0	0	0.0%
District 1/Grid 10	0	0	0	0	0.0%	0	0	0	0	0	0.0%
District 1/Grid 11	15	11	26	14	85.7%	6	0	0	6	4	50.0%
District 1/Grid 12	0	0	0	1	-100.0%	0	0	0	0	0	0.0%
District 2/Grid 5	21	5	26	20	30.0%	3	1	0	4	5	-20.0%
District 2/Grid 16	1	1	2	3	-33.3%	0	1	0	1	0	100.0%
District 3/Grid 6	4	7	11	15	-26.7%	3	1	0	4	2	100.0%
District 4/Grid 7	2	1	3	2	50.0%	0	0	0	0	0	0.0%
District 4/Grid 15	0	0	0	0	0.0%	0	0	0	0	0	0.0%
District 5/Grid 8	4	5	9	5	80.0%	2	0	0	2	4	-50.0%
District 6/Grid 9	9	7	16	10	60.0%	1	0	0	1	5	-80.0%
District 6/Grid 13	0	0	0	0	0.0%	0	0	0	0	0	0.0%
District 6/Grid 14	0	0	0	0	0.0%	0	0	0	0	0	0.0%
Other	0	0	0	0	0.0%	0	0	0	0	0	0.0%
TOTALS	61	40	101	76	32.9%	16	3	0	19	21	-9.5%

**Patrol Operations: Parking Enforcement, Abandoned Vehicles, House Checks, Business Checks,
Business Checks, SIFA/1037 (Self Initiated Field Activity/Suspicious) & Open Doors**

Parking Enforcement				House Checks			Abandoned Vehicles		
DISTRICTS	2007	2006	% Change	2007	2006	% Change	2007	2006	% Change
District 1/Grid 1	1	0	100%	170	127	34%	0	0	0%
District 1/Grid 2	7	16	-56%	304	178	71%	11	0	1100%
District 1/Grid 3	0	0	0%	2	0	200%	4	0	400%
District 1/Grid 4	2	6	-67%	15	9	67%	1	1	0%
District 1/Grid 10	0	0	0%	0	0	0%	0	0	0%
District 1/Grid 11	12	16	-25%	1	2	-50%	7	12	-42%
District 1/Grid 12	0	0	0%	0	0	0%	0	0	0%
District 2/Grid 5	21	8	163%	16	19	-16%	5	13	-62%
District2/Grid 16	0	0	0%	0	0	0%	0	0	0%
District 3/Grid 6	43	26	65%	0	0	0%	7	13	-46%
District 4/Grid 7	40	6	567%	148	25	492%	15	15	0%
District 4/Grid 15	0	0	0%	0	0	0%	0	0	0%
District 5/Grid 8	30	8	275%	120	101	19%	4	8	-50%
District 6/Grid 9	45	26	73%	26	29	-10%	2	4	-50%
District 6/Grid 13	7	0	700%	2	0	200%	1	0	100%
District 6/Grid 14	0	0	0%	0	0	0%	0	0	0%
Other	0	0	0%	0	1	-100%	0	0	0%
TOTALS	208	112	86%	804	491	64%	57	66	-14%

Business Checks				SIFA/1037			Open Doors		
	2007	2006	% Change	2007	2006	% Change	2007	2006	% Change
Totals	5887	4711	25%	74	94	-21%	82	55	49%

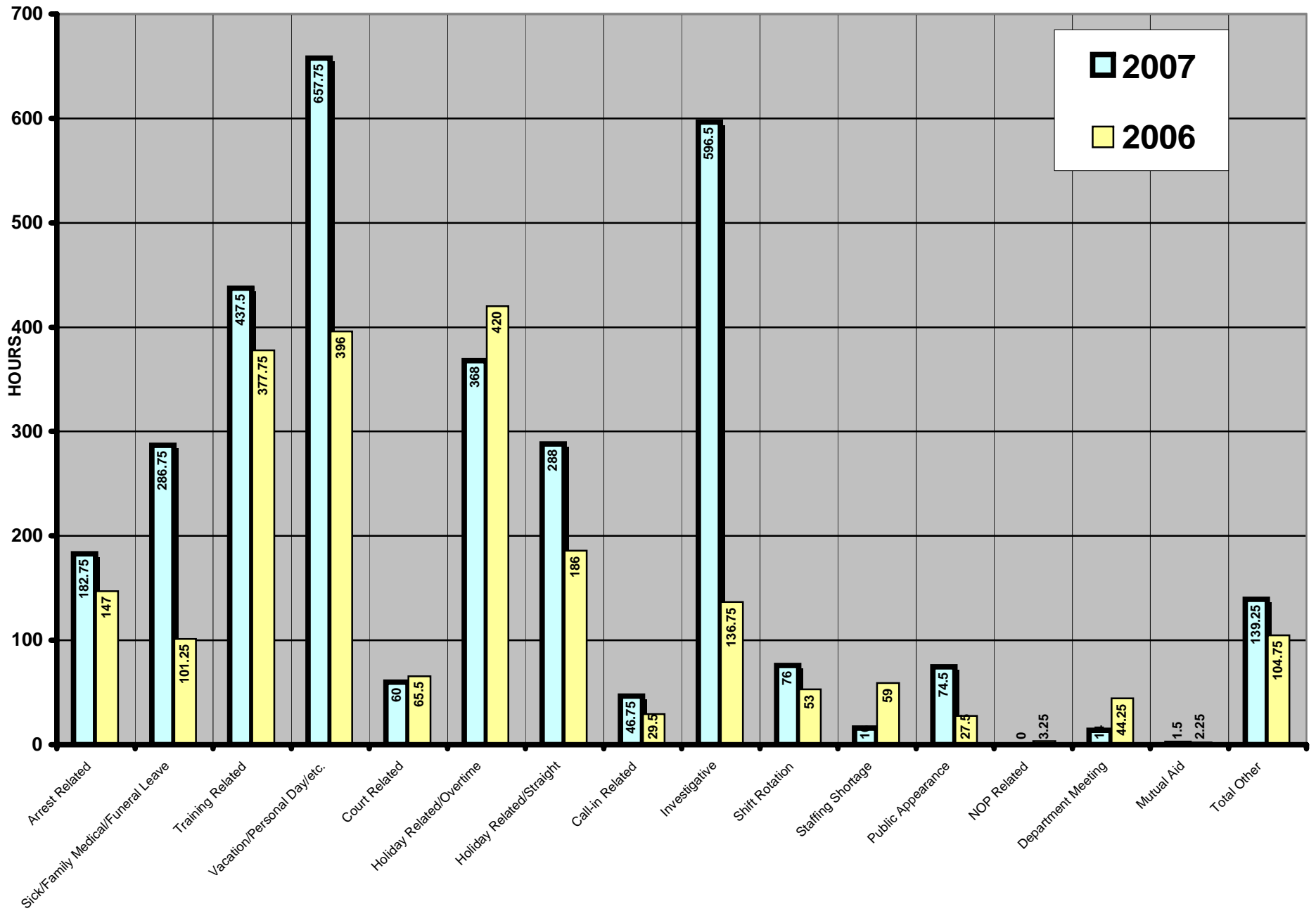
Financial Information

Municipal Court Fines/Forfeitures	2007	2006
January	\$ 1,828.80	\$ 1,464.12
February	\$ 2,202.50	\$ 2,056.51
March	\$ 16,440.01	\$ 54.59
April	\$ 1,986.80	\$ 3,531.87
May	\$ 4,390.88	\$ 1,351.26
June	\$ 2,308.65	\$ 1,876.55
July	\$ 3,110.01	\$ 2,117.50
August	\$ 3,764.40	\$ 2,348.75
September	\$ 2,289.50	\$ 1,991.32
October	\$ 2,690.99	\$ 3,327.07
November	\$ 1,850.00	\$ 2,217.20
December	\$ 1,323.00	\$ 2,333.63
Year to Date Amount	\$ 44,185.54	\$ 24,670.37

Fond du Lac Clerk of Courts Fines/Forfeitures	2007	2006
January	\$ 137.81	\$ 8.50
February	\$ -	\$ -
March	\$ -	\$ 228.57
April	\$ 63.64	\$ 70.39
May	\$ 268.27	\$ -
June	\$ -	\$ -
July	\$ -	\$ 261.26
August	\$ 138.86	\$ -
September	\$ -	\$ -
October	\$ -	\$ -
November	\$ -	\$ -
December	\$ -	\$ -
Year to Date Amount	\$608.58	\$ 568.72

Other Revenue	2007	2006
Parking Tickets	\$ 3,600.00	\$ 1,925.00
Bike Licenses	\$ 160.00	\$ 120.00
Operators Licenses	\$ 1,320.00	\$ 1,020.00
Vehicle Lockout Fees	\$ 930.00	\$ 900.00
Copies	\$ 135.69	\$ 130.31
Miscellaneous	\$ 270.00	\$ 1,075.00
Totals	\$ 6,415.69	\$ 5,170.31

OVERTIME ANALYSIS



OVERTIME COMPARISON

	2007	2006
Arrest Related	182.75	147
Sick/Family Medical/Funeral Leave	286.75	101.25
Training Related	437.5	377.75
Vacation/Personal Day/etc.	657.75	396
Court Related	60	65.5
Holiday Related/Overtime	368	420
Holiday Related/Straight	288	186
Call-in Related	46.75	29.5
Investigative	596.5	136.75
Shift Rotation	76	53
Staffing Shortage	16	59
Public Appearance	74.5	27.5
NOP Related	0	3.25
Department Meeting	14	44.25
Mutual Aid	1.5	2.25
Total Other	139.25	104.75
Total Overtime Hours	3245.25	2153.75
Reason By Percent	2007	2006
Arrest Related	5.63%	6.83%
Sick/Family Medical Leave/Funeral Leave	8.84%	4.70%
Training Related	13.48%	17.54%
Vacation/Personal Day/etc.	20.27%	18.39%
Court Related	1.85%	3.04%
Holiday Related/Overtime	11.34%	19.50%
Holiday Related/Straight	8.87%	8.64%
Call-in Related	1.44%	1.37%
Investigative	18.38%	6.35%
Shift Rotation	2.34%	2.46%
Staffing Shortage	0.49%	2.74%
Public Appearance	2.30%	1.28%
NOP Related	0.00%	0.15%
Department Meeting	0.43%	2.05%
Mutual Aid	0.05%	0.10%
Total Other	4.29%	4.86%
Total Overtime Hours	100.00%	100.00%